



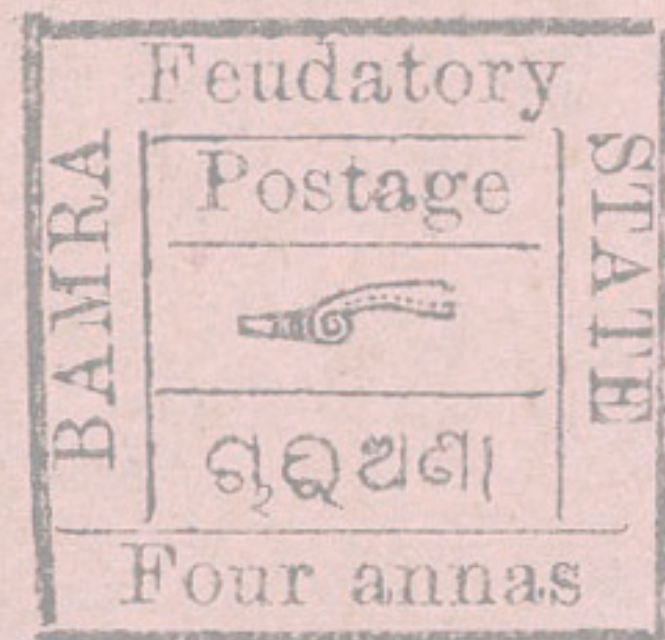
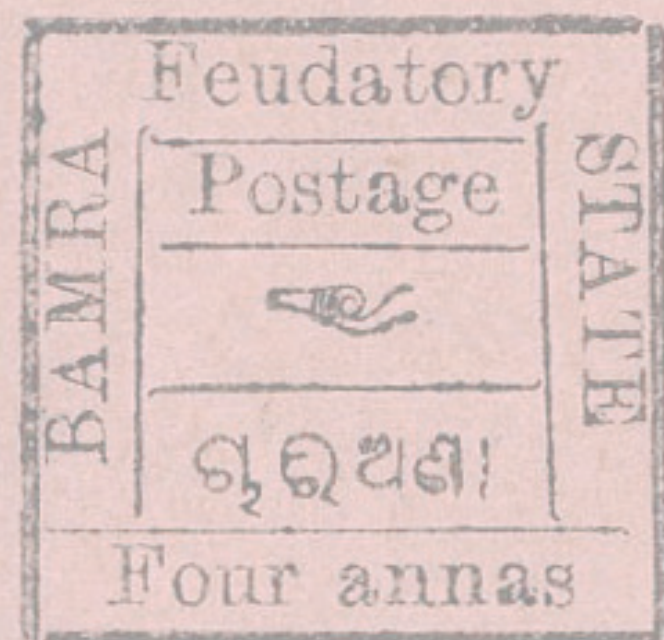
STANLEY
GIBBONS

SIGNATURE



The Alan Jobling Walker Collection of India & Indian States

23rd March 2023





STANLEY
GIBBONS
AUCTIONS

Sale 5942

The Alan Jobling Walker Collection of India & Indian States

Notes For The Guidance Of Bidders

INSPECTION OF LOTS

Public viewing takes place prior to the auction. Dates and times for this auction are published at the start of the catalogue. We regret that we do not offer a postal viewing service, however black and white photocopies and colour scans of most small lots in this sale can be supplied on request. Lots that are housed in albums, boxes or cartons and lots that are of a fragile nature which would require special handling are not available for photocopying or scanning. All lots are available to view on www.stanleygibbons.com/auctions

PAYMENT

We accept the following forms of payment:

Debit Cards	Switch, Maestro, Delta, Solo (no service charge)
Credit Cards	Visa, Mastercard
Cheques	All cheques should be made payable to Stanley Gibbons Ltd
Cash	Payment in cash is welcomed to a maximum of €15,000 (or sterling equivalent) per auction
Bank Transfer	Bank details will be provided on request

Payment is due immediately upon receipts of an invoice.

Your invoice will be emailed to you with a link to pay.

If you do not receive an invoice and believe you should have, please email auctions@stanleygibbons.com

Trade Terms by prior approval by the Auction Department only: Strictly, cleared payment within 30 days from the date of sale.

AUCTION CHARGES

All lots in this catalogue are subject to Buyer's Premium. The Buyer's Premium is 24% inclusive of VAT

STORAGE CHARGES

Storage charges will be levied on lots that remain in our premises after the expiration of three months from the date of sale. Such charges will be applicable to lots that have been paid for but not collected and to lots that are unsold but which have not been reoffered. The storage charge will be 1% of the hammer price for purchased lots or 1% of the lower estimate for unsold lots with a minimum charge of £10 per month. If the material is not claimed within twelve months of the date of sale, Stanley Gibbons Ltd shall be entitled to dispose of the material to defray accrued storage charges.

BIDDING INCREMENTS

Bidding generally opens below the low estimate and will advance in the following order. The Auctioneer may vary these steps without notice during the course of the auction. Normally bidding increments are as follows:

£1 - £300 by £10	£1,000 - £3,000 by £100	£6000 to £20,000 by £500
£300 - £600 - £320, £350, £380, £400 etc	£3000 - £6000 - £3,200,	£20,000 and up, Auctioneers Discretion
£600 to £1000 by £50	£3,500, £3,800, £4,000 etc	

Bid received that do not correspond to the above will be rounded down to the nearest step.

ESTIMATED VALUES

The prices quoted to the right of each description are the Auctioneer's estimate of the market value for each lot. Lots may sell above or below these estimates.

The Alan Jobling Walker Collection of India & Indian States

To be held at:
Stanley Gibbons
399 Strand
London
WC2R 0LX

- Bid online via SG Live, instructions can be found at:
auctions.stanleygibbons.com/buying-with-us/sg-live

Thursday 23rd March - Starting at 11:00 GMT

Viewing

Private viewing is available by appointment

Public Viewing will be held from 13th - 17th March 2023

More images of the lots in the auction are available on our website, if you require further imagery or a condition report, please contact Dror Zur on dzur@stanleygibbons.com

Buyer Fees

All lots are subject to Buyer's Premium of 20% on the hammer price.

VAT of 20% is payable on the Buyer's Premium where the buyer is resident in the UK or the lot is purchased by a Non-UK buyer and sent to a UK address.

Where an estimate is prefixed by a Ω symbol it indicates that the lot is subject to a further 5% on the hammer price in addition to the Buyer's Premium if bought by a UK resident or purchased by a Non-UK buyer and sent to a UK address.

Postage charges are calculated based on the size and weight of the items purchased and will be included on your invoice.

Meet the Philatelic Team

Auctions



Tom Hazell
Head of Auctions

thazell@stanleygibbons.com | +44 (0) 207 557 4452



Dickon Pollard
Senior Philatelist

dpollard@stanleygibbons.com



Andrew Ellis
Auctions Operations Assistant

aellis@stanleygibbons.com | +44 (0) 207 557 4458



Paul Mathews
Valuations

pmathews@stanleygibbons.com | +44 (0) 207 557 4411



Oscar Young
Specialist Auction Describer

oyoung@stanleygibbons.com | +44 (0) 207 557 4457



Ed Barrow
Valuations

ebarrow@stanleygibbons.com | +44 (0) 207 557 4401



Andrés Peinado
Auctions Operations Assistant

apeinado@stanleygibbons.com | +44 (0) 207 557 4405



Mike Kimberley
Specialist Auction Describer

mkimberley@stanleygibbons.com | +44 (0) 207 557 4402

Philatelic Support



Dror Zur
Scanning Requests

dzur@stanleygibbons.com | +44 (0) 207 557 4482

Commonwealth



George James
Head of Commonwealth

gjames@stanleygibbons.com | +44 (0) 207 557 4404



Dr Philip Kinns
Emeritus Director of Philately

By appointment only



Robert Smith
Commonwealth Specialist

rsmith@stanleygibbons.com | +44 (0) 207 557 4459



Andrew Mansi
Commonwealth Specialist

amansi@stanleygibbons.com | +44 (0) 207 557 4455

Great Britain



Scott Bradley
Head of Great Britain

sbradley@stanleygibbons.com | +44 (0) 207 557 4426



Vince Cordell
Senior Philatelic Specialist

vcordell@stanleygibbons.com | +44 (0) 207 557 4414



Michael Barrell
Great Britain Sales & Specialist

mbarrell@stanleygibbons.com | +44 (0) 207 557 4456



Victoria Lajer
Managing Director, Philately

vlajer@stanleygibbons.com | +44 (0) 207 557 4464



Alan Jobling Walker

7 February 1942 to 4 September 2022

Alan Walker was a beloved husband, father, and grandfather. Born in Gateshead, in the late 1970s Alan and his young family moved to Bolton, where he lived until his death.

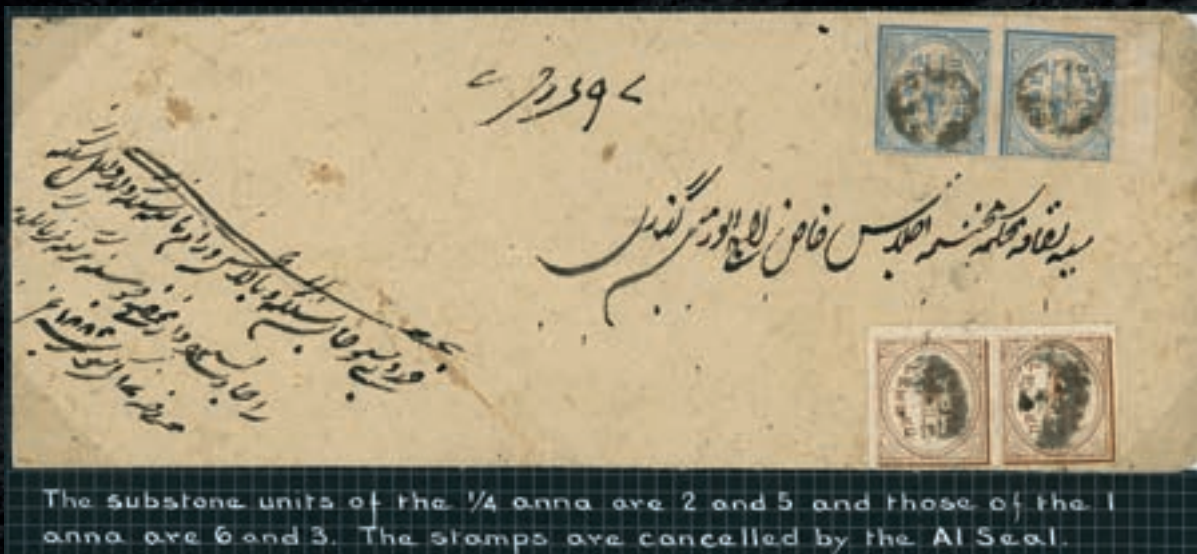
A chief structural engineer and designer by trade, Alan had a keen mind and eye for detail. Here his legacy lives on, after being responsible for the steel design of many memorable buildings across the world. From the Manchester Trafford Centre to The Royal Opera House – from Sellafield Nuclear Plant to The Globe Theatre in London.

But Alan was a collector at heart. Aged six, his neighbour Ronnie introduced Alan to stamp collecting and sparked a lifelong passion and dedication for collecting Indian Native States stamps in his spare time.

He adored the history of the stamps, the stories, and the detail. To him, they were works of art. And he loved nothing more than spotting a rare imperfection or adding something new to his collection. Over his lifetime, he lovingly curated over 60 albums.

Alan's family hope others with the same passion will now get the chance to enjoy his philatelic collection, as he did for so many decades.

1



The substone units of the ¼ anna are 2 and 5 and those of the 1 anna are 6 and 3. The stamps are cancelled by the A1 Seal.

Shown at 70%

ALWAR

1 (Env)

c.1880s long registered native envelope, franked by ¼a bright greenish blue pair (Stone A2) and 1a pale yellowish brown pair (Stone A1), well tied by intaglio seals, some minor stains, still a rare item. SG 1a, 2

£300-£400

2 (Env)

c.1880s cover from Alwar to Delhi with ¼a grey blue (Stone A1) used in combination on India QV ½a postal stationery envelope, with adhesive cancelled by intaglio seal and M/S, with Ulwur City exchange office cds for 16 AUG and Delhi arrival for 17 AUG, some peripheral wear and staining, otherwise very scarce combinational usage. SG 1c

£250-£300

3 (Env)

1877-1899 detailed study collection of ¼a stone A1 on pages, with shades, blocks and covers, we note: page detailing the 'A' stone matrix and noted characteristics, reconstructed blocks of 30, cover to Delhi franked by ¼a grey-blue tied by seal and bearing Postage Due 1 Anna boxed h/s and native registered envelope franked by ¼a (2) and 1a brown, generally fair to fine condition, an interesting lot. SG 1-2

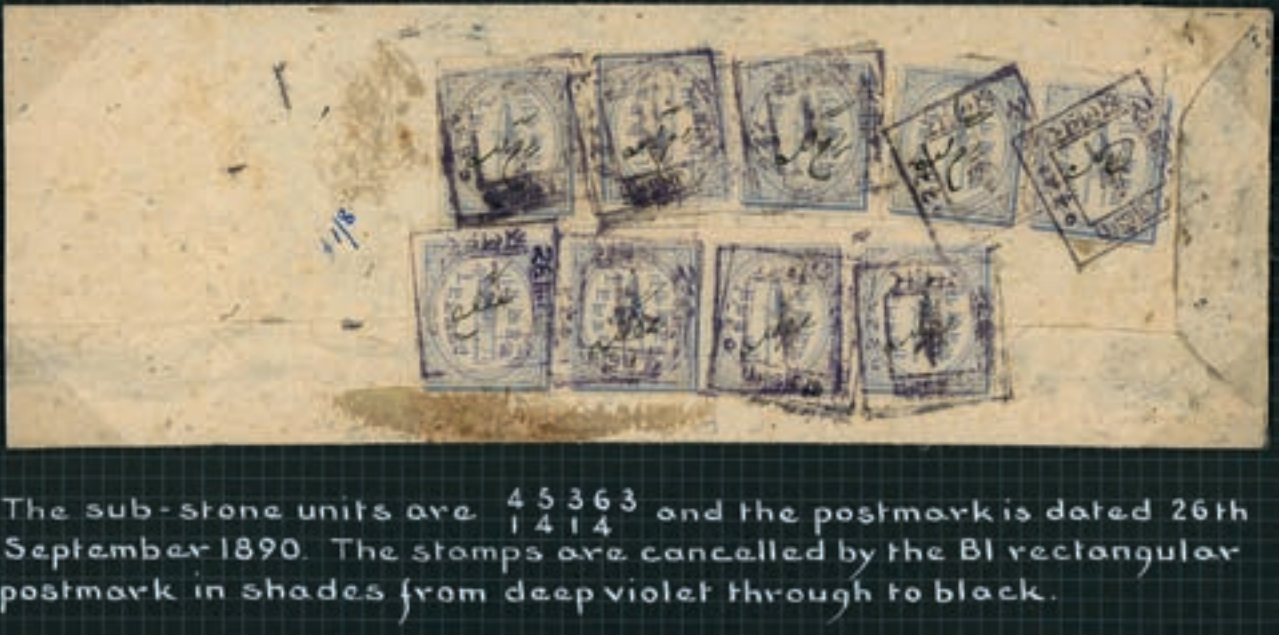
£200-£250

4 (Env)

1877-1899 detailed study collection of ¼a stone A2 on pages, with shades, covers, we note: page elaborating on the characteristic sub flaws of the 'A2' stone, nearly all examples plated, with multiples and 1882 local native envelope franked by ¼a greenish blue (4) tied by A1 type seals, generally fair to fine condition, most interesting.

£200-£250

6



Shown at 80%

5 (Env)

1877-1899 detailed study collection of $\frac{1}{4}$ a stones A3 & A4 on pages, with shades, covers, we note: characteristic flaws with diagrams numerous blocks with stone A3 block of 19, postmark interest with seals and boxed datestamps, noted paper types, native envelope with strip of four $\frac{1}{4}$ a tied by pen stroke and seals, and small local cover tied by single $\frac{1}{4}$ a with pen strokes and boxed postmark, Stone A4, similarly represented with native envelope from Thanagazi to Jaipur franked by $\frac{1}{4}$ a with original enclosure and Postage Due 1 Anna mark, generally fair to fine condition. Interesting.

£300-£400**6 (Env)**

1877-1899 detailed study collection of $\frac{1}{4}$ a stone B on pages, with shades, we note: page of characteristics' and intermediate flaws of 'B' stone, blocks and multiple strips, nearly all plated, postmarks with seals organised by type, with boxed postmarks in black and violet and native cover franked by $\frac{1}{4}$ a (9) tied by boxed postmarks in shades from violet to black, generally fair to fine.

£100-£150**7 (Env)**

1877-1899 detailed study collection of 1a stones A1 & A2 on pages, with shades, blocks and covers, we note: page of characteristics and intermediate flaws of the stone, blocks of 73 and 70, 1a brown, Stone A2, with multiples and noted stone flaws, with postmarks, generally fair to fine condition, an interesting lot.

£300-£400**8 (Env)**

1877-1899 detailed study collection of 1a stones B & C on pages, with shades, blocks and covers, we note: page of characteristic and intermediate flaws for each stone, nearly all examples plated by the collector, 1a chocolate stone B, on native cover, tied by seal and registered cover franked by $\frac{1}{4}$ a and 1a pairs tied by seals and m/s, generally fair to fine condition, most interesting lot.

£300-£400



BAMRA

9 (Card)

1888 1/4a black on yellow, imperforate, unused, very fine example of this rare stamp. SG 1, £2250

£1000-£1200

10 (Env)

1888 first issues range positioned by the collector we note 1/2a black on rose, 1a black on blue, 2a black on green, 4a black on yellow as vertical pair, and 8a black on rose, unused, some faults with tear to 1/2a, still a good group. SG 2-6

£350-£400

11 (Env)

1890-93 1/4a black on reddish purple, Setting Va, complete sheet of 16, with variety, 'AMRA' inverted, R.4/4, unused, some light bends, clear of variety, fine. SG 10,10b

£100-£120

12 (Env)

1890-93 1a black on orange-yellow Setting IX, part reconstructed sheet (less pos. 11, the annas for anna var), close to large margins, unused, odd blemishes, still a difficult lot to replicate. SG 14/31 £1200+

£350-£400

13 (Card)

1890-93 1a black on orange-yellow Setting IX, capital 'P' showing variety, 'annas for 'anna', R.3/3) unused, fine and scarce. SG 14a

£150-£170

14 (Env)

1890-93 2a black on rose-lilac Setting IB, capital 'P', part reconstructed sheet of 14, with variety 'Eudatory' for 'Feudatory' R.2/4, unused, variety sadly with small thin, otherwise a largely fine assortment. SG 15a

£180-£220

15 (Card)

1890-93 4a black on dull rose, showing variety 'Eudatory' for 'Feudatory' (R.2/4), unused, touching to good margins, defective at centre, still a very rare stamp. SG 19a, £2250

£500-£600

16

Setting IB Capital P throughout.

17

**16 (Env)**

1890-93 4a black on dull rose Setting IB, as reconstructed sheet of twenty (in block of 16 and strip of 4) (far left vertical strip of four re attached) , showing variety 'Euodatory' for 'Feudatory' (R.2/4) good margins, trivial blemishes (variety unaffected), a very rare item. SG 19a

Note the sizes of the central ornament's as they gradually increase from 4mm to 6½mm and 11mm at foot of the sheet.

£1200-£1500

17 (Card)

1890-93 8a black on rose-lilac showing variety, 'Postage', unused with good margins, fine. SG 21a

£180-£220

18



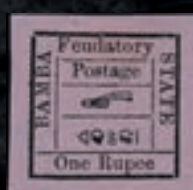
19



21



22



24

**18 (Card)**

1890-93 8a black on rose-lilac setting II, block of four with top left stamp showing variety, 'BAMBA', lower right stamp with small internal split, otherwise fine. SG 21b

£250-£300

19 (Card)

1890-93 8a black on rose-lilac, showing variety 'BAMBA' (R.2/1), fine unused with good margins. SG 21b

£200-£250

20 (Env)

1890-93 8a black on dull rose setting VII unused complete sheet of 16 with capital & small 'P', large margins, small tear at lower right, otherwise fine. SG 23-38, £800+

£260-£300

21 (Card)

1890-93 1r black on rose-lilac, setting IB, capital 'P', showing variety 'Eudatory' for 'Fuedatory' R.2/4, unused, small tear at foot affecting design and cut in margin (clear of design), still a collectable example, scarce. SG 24a, £1200

£300-£350

22 (Card)

1890-93 1r black on rose-lilac, Settling II, showing variety, 'BAMBA', unused with large margins, very fine. SG 24b

£300-£350

23 (Env)

1890-93 collection of unused complete sheets organised by setting, including: 1/4a black on rose-lilac (capital P) with listed 'Eudatory', 'Quarter' & inverted 'e' in 'postage' varieties, 1/4a black on reddish purple (2), 1/2a black on blue green with first 'a' in anna' inverted, 1/2a black on dull green and 2a black on dull rose, generally fair to fine condition. SG 8-33 (6)

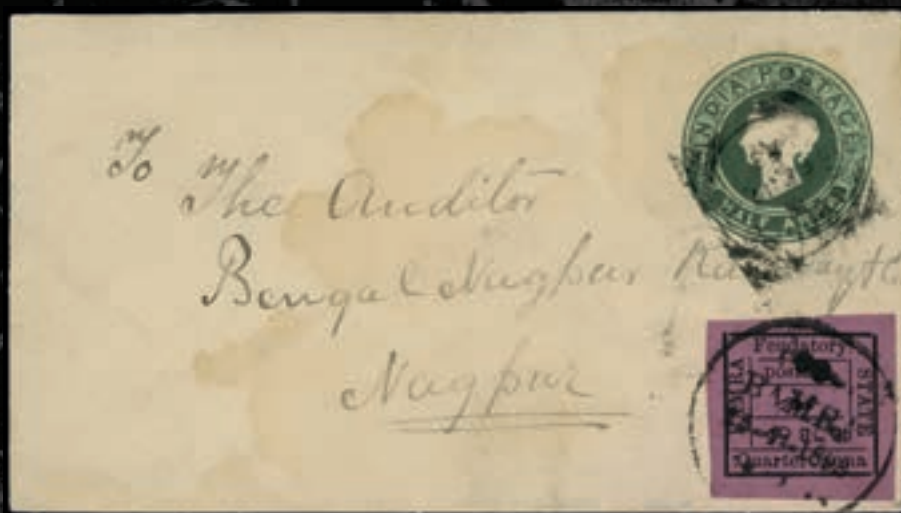
£300-£400

24 (Card)

1890-93 1r black on rose-lilac, Settling II, showing variety, 'Postagc', unused with large margins, very fine. SG 24c

£300-£350

25



26



25 (Card)

1893 cover from Bamra to Nagpur franked by 1/4a black on reddish purple used in combination on India QV 1/2a green envelope, tied by Bamra cds, and Sambalpur exchange office for 17 FE, backstamped by Nagpur arrival for 20 FE, minor surface stain, still very rare. SG 27

£500-£600

26 (Env)

1890-93 seven unused sheets to 1r, mounted on album pages with detailed descriptions, identifying minor varieties settings types and capital and small 'P's, we note: 1/4a bright rose, 1/4a reddish purple, 1/2a dull green (with detailed analysis of character varieties) 1a bistre-yellow, 4a dull rose, 8a bright rose and 1r bright rose, fair to fine condition, with 1r sheet left column with some slight toning, otherwise fine, scarce lot. SG 10-40

£300-£400

30



31

**27 (Env)**

1890-93 mint and used range organised by ornament length and Postage with capital or small 'P', we note: 1/4a black on rose-lilac with listed 'Quatrer' 'e' of postage invert & 'Eudatory' varieties, 1/4a black on reddish purple First 'a' in 'anna' invert, 1a black on orange yellow, Small 'P' 1a black on orange yellow (sadly with small tear), 8a black on rose-lilac (2), mixed condition, mostly fine.

£350-£400

28 (Album)

1891-1893 mint and used collection well written up by the collector, organised by types and identified settings, including: 1890-91 1st issue reprints with sheets, 1890-93 capital and small P types, duplicated with complete sheets and reconstructed or part reconstructed sheets, noted varieties with 1/4a black on rose lilac, 'Eudatory', 'Quatrer', and inverted 'e' 1/4a black on reddish purple, 'M' & 'A' inverted, 'AMRA' inverted (2), 1a black on yellow 'Eudatory' (thinned), duplication throughout, generally fair to fine condition, a lot for the specialist.

£2000-£2500

29 (Env)

1889-1890 collection of unused postal stationery, organised by type and setting we note; 6p envelopes with 24 ornaments at top and foot, 6p long envelopes, two with ornate coiled ring border, 1/2a envelopes, noting inscription sizes, mixed condition with fine. (12)

£200-£250

BARWANI

30 (Card)

1917-21 1/4a blue-green, clear impression on medium wove, Perf 7 (on all sides) complete sheet of four, fine unused. Very scarce. SG 1b, £1400+

£600-£700

31 (Card)

1927 4a orange brown, poor impression on thin brittle wove, Perf 7, complete sheet of four, less top margin, fine unused. Very Scarce. SG 22

£250-£300

32



33



32 (Card)

1928-32 native envelope franked by 1a rose-carmine perf 11, tied by native cds's, some bends, still attractive. SG 30

£150-£170

33 (Card)

1939-47 2a bright purple, wide setting, complete sheet of four, full unmounted o.g; small nick in margin selvage, not detracting, a fine scarce pane. Very Scarce. SG 40B

£250-£300

34



35

35

**34 (Env)**

1938 Rana Devi Singh 1a brown, used on local cover from Pansemal to Barwani, tied by native cds for 13 Ap 40, and other transit arrival markings, plus 1a as mint single, minor bends to envelope, clear of adhesive, still an attractive single franking. SG 43

£100-£150

35 (Album)

1921-47 mint and used well written up collection housed in an album, organised by issue with noted perf and paper types we note; 1921 blurred impression 1/4a & 1/2a, 1922 clear impression perf 7, 1/4a dull blue, 1927 poor impression on thin wove to 4a yellow-brown and 4a on thick wove, 1928-32 on thick glazed paper with TETE BECHE pairs, 1932-47 range identified by setting types, postal history, noted forgeries and reprints, generally fair to fine, a lot for the specialist.

£700-£800

36



Shown at 85%

36



Shown at 85%

36 (Env)

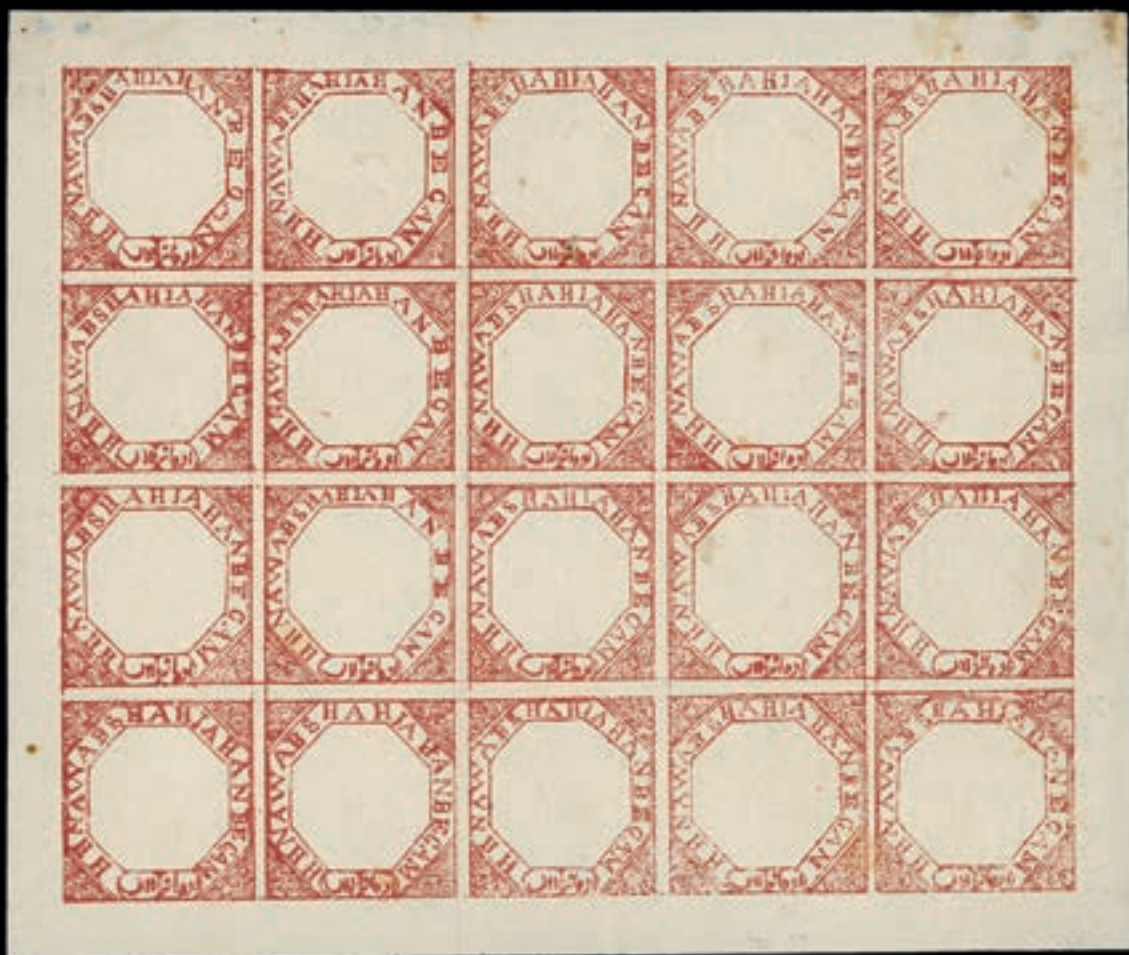
1921-32 assortment of complete sheets, organised by type on album leaves, we note: 1921 blurred impressions 1/4a green, 1/2a ultramarine, 1921 clear impression on laid batonne paper, 1/4a, 1/2a (2), 1922 1/4a steel blue, 1923 1/4a black on poor quality wove paper (very scarce, SG 17), 1928-32 1/4a 1/2a on thick glazed paper perf 7, Perf 10 1/2 with 1/4a and 1/2a with TETE-BECHE block, generally fair to fine condition.

£500-£600

37 (Env)

1932-47 collection of booklet sheets of four, identified by the collector by settings, perf type etc... we note; 1932 close setting (2 1/2-4mm) values to 4a, 1945-47 1a brown wide setting, 1933 close setting close setting, 1939 wide setting with 2a rose-carmin and 4a pale sage-green, generally fair to fine condition.

£400-£500



39



BHOPAL

38 (Env)

1872 1/2a red complete sheet of 20, showing varieties, 'BFGAM' (R.3/1), 'BEGAN' (R.2/2 & R.4/4) and 'EGAM', unused without gum as issued, some creasing and light tones, still very difficult to acquire. SG 2a,b,c

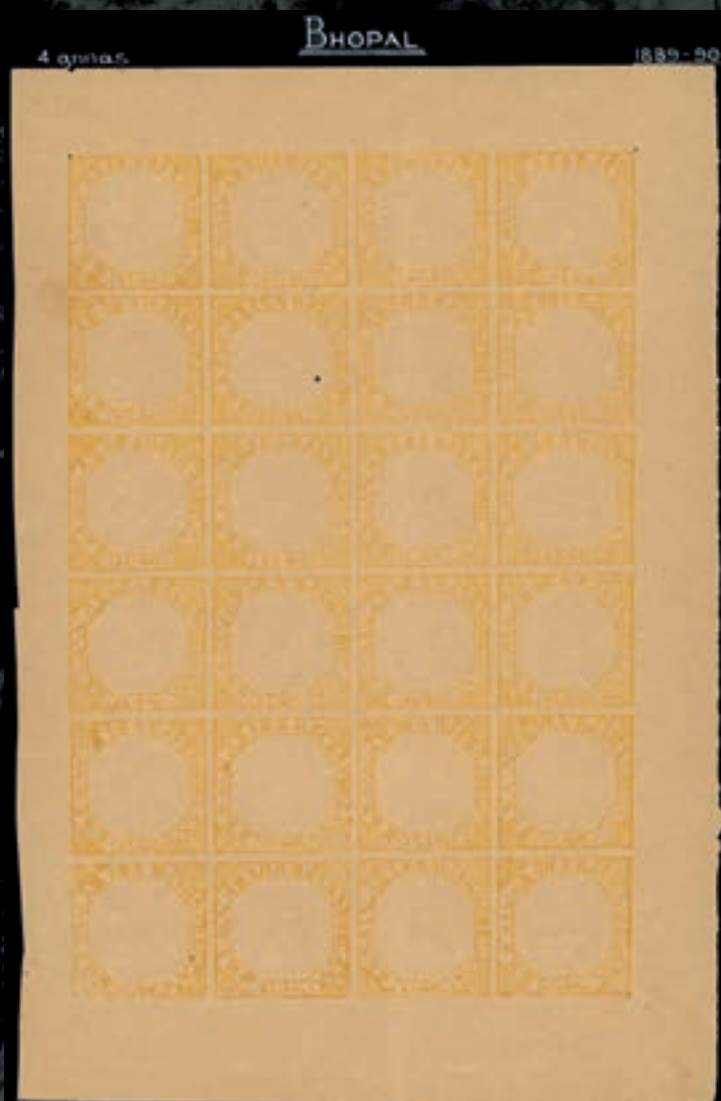
£200-£250

39 (Card)

1872 1/2a red, type 1 used block of eight on remnant piece, with second stamp on bottom row variety 'BEGAN', cancelled by native box cancel, piece a little creased, otherwise attractive multiple. SG 2,2b

£120-£150

40



Shown at 60%

41

**40 (Env)**

1889-90 imperforate set of four to 4a orange-yellow as unused complete sheets of twenty four, with 1a showing 'EEGAM' (R.2/3) & 'BBGAM' (R.3/1), 2a showing 'BBGAM' (R.1/2) 'NAWAH' (R.4/2) varieties, some imperfections, still scarce as complete sheet. SG 29-32

£100-£150**41 (Card)**

1903 1r rose, circular embossing on laid paper, fresh unused with four large margins, very fine example of this I.F.S rarity, with few recorded. SG 98a, £2750

£1000-£1500

42

**42 (Card)**

1932-34 1/2a sunken die proof on thick wove, in yellow-green the issued colour, attractive. SG O313var

£100-£150

43 (Album)

1878-1908 mint and used collection well written up in an album, with noted varieties, complete sheets, reconstructions and postal history, we note: 1878 1/4a black Plate 1 and 2 as complete sheets, 1881 issues with multiples, 1889 1/4a with some covers, 1889-90 imperf and perforated ranges, 1884 and 1886 ranges with complete sheets, 1902 octagonal embossing part set to 2a, 1903 circular embossing part set to 8a lilac, with some complete sheets including 4a yellow on wove paper, and examples on laid paper, later 1908 imperf proofs and 1a green with blocks, generally fair to fine condition, a lot with much potential for the specialist.

£2000-£2500

44 (Album)

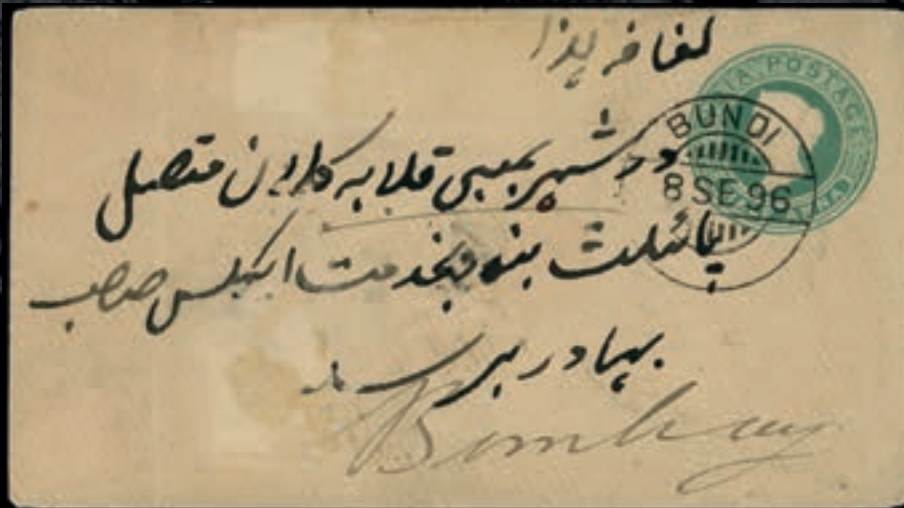
1908-49 mint and used collection of Officials, well written up in an album, with noted varieties, complete sheets, opt and surcharge settings and postal history, we note: 1908-11 typo opt types with 4a brown block of 30, 1932-33 1/4a orange perforated plate proof, 1a carmine-red block of 18, 1935-36 detailed observations of surcharge varieties 1935-36 1a on 2a (R) showing first N in ANNA inverted, 1a on 2a surcharge inverted, 1a on 4a showing first N in ANNA inverted, range of postal history and pages documenting official reprints, generally fair to fine condition.

£1000-£1500

45 (Env)

OFFICIAL: 1932-49 collection of unused complete sheets including: 1932 1a carmine red imperf printers waste sheet, 1935 ONE ANNA on 2a ultramarine, (10x10), 1935 1a6p blue and claret (7x10), 1936 1/2a purple-brown and yellow-green sheet (9x8) with ornamental frame, 2a brown and blue (x2 8x7) and 4a blue and brown (8x7), fair to fine condition, scarce as sheets. SG O315-O339

£100-£150



BIJAWAR

46 (Env)

1935-1937 mint collection on album leaves, we note: 1935-36 set of five to 2a with 2a imperf between vertical pair, complete sheets of 6 of the first set with imperf double sheet of the 3p brown and perforated double sheet of 2a, 1936 rouletted set and 1937 perf 9 set to 1r bright violet with 1r showing variety '1 Rs' for '1 R' (R.1/2, SG 15ba) and page of forgeries, generally fine condition. SG 1-15

£300-£400

BUNDI

47 (Card)

1894-1900 'Dagger' issues collection on pages including: 1894 second issue, with example on local cover, short dagger, 1897-98 Narrow Dagger set to 1r yellow on blue, 1898 Wide Dagger to 1r and 1r on wove paper, mixed condition with fine, a lot worthy of inspection. SG 2-17

£250-£300

48 (Card)

1896 Philatelic cover to Bombay franked by 1/2a slate-grey imperf on wove paper, used in combination on India QV 1/2a green envelope, with adhesive tied by native cds, transferred at the Imperial office at Bundi with cds dated 8 SEP, backstamped by Bombay arrivals for 11 SEP, crease and surface marks to envelope, otherwise fine, scarce. SG 2

£100-£120

49 (Env)

1915-23 2 1/2a chrome yellow and official sheet opt type O1 in black (sideways), on thin wove, tablet type A, Benns setting 14, as complete sheets, unused. SG 21/O2A

£50-£60

50 (Env)

1914-41 4a yellow green & 6a cobalt tablet type A on thin wove Benns setting 3 and 14 respectively, as complete sheets, unused, minor roulette separation to 6a (sensibly reinforced by hinge) otherwise fine, the 4a scarce as a sheet. SG 23/24

£100-£120

51 (Env)

1914-41 2a emerald and Official sheet opt type O2 in black, mixed settings, tablet type B (R.1/1) and rest tablet type C Benns setting 20, as complete sheets, unused. SG 29/40 & O9B/O18B

£80-£100

52



53

**52 (Card)**

1914-41 4a yellow green on medium wove, tablet types 'B' & 'C' (pos. 1 type B and 2,3,4 type C) Bennis Setting 13, as complete sheet, unused, fine. SG 32/41

£120-£150

53 (Card)

1914-41 12a sage-green on thin wove, mixed settings Tablet type B (R.1/1) and type C, Bennis setting 13, as complete sheet, unused. SG 36-44

£200-£250

54 (Card)

1917-41 1/4a cobalt and Official 1/4a cobalt opt type O2 in red, on medium wove, tablets type 'C' and 'E' (C-E se-tenant) Bennis setting 45 as complete sheets, fine unused. SG 37 & 54ab, O15caB & O32cab

£120-£150

55 (Card)

1917-41 1r lilac tablet type C, on thin to medium wove Bennis setting 9 as complete sheet, fine unused. SG 45

£100-£120

56



57

**56 (Card)**

1917-41 3r grey-blue and chocolate on medium wove, tablet type C, Benns setting 58 as complete sheet, unused, fine. SG 47a, £480+

£160-£180

57 (Card)

1917-41 5r scarlet and emerald, on thin wove, tablet type 'C', Benns setting 12, unused, very fine. SG 49

£180-£220

58 (Env)

1918 2½ buff & 10a bistre on thin wove tablet type D, Benns setting 16 as complete sheets, fine unused. SG 50-52 (2)

£100-£150

59 (Card)

1923 Local registered cover franked by 3a red-brown, tablet type D, on thin wove, Benns setting 16, tied by native cds and registration label with annotation in blue M/S, few light tones still attractive. SG 51

£60-£80

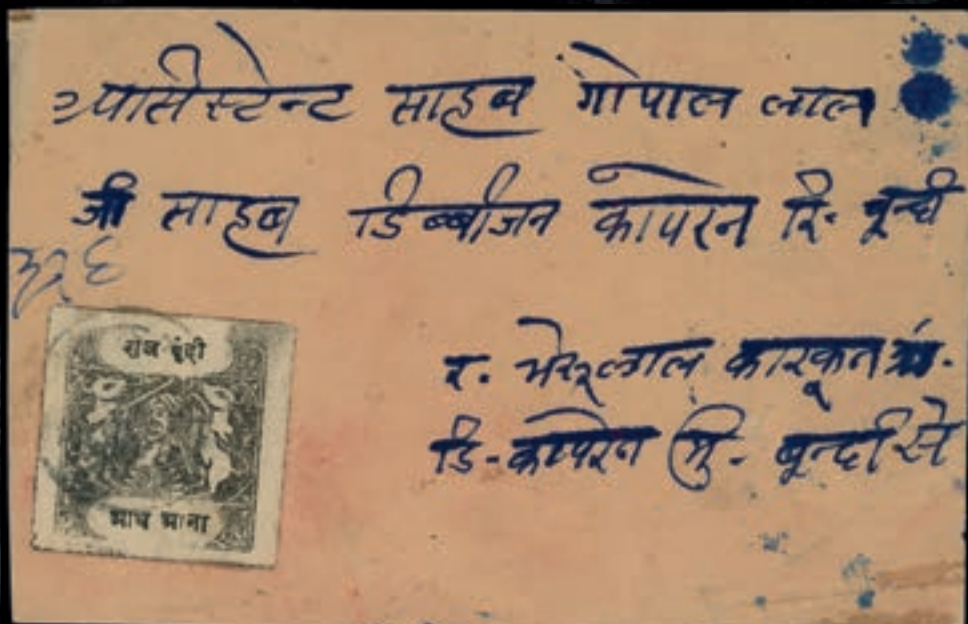
60



61



62

**60 (Card)**

1918 12a blackish-green tablet type D on thin wove, Benns setting 17, as complete sheet showing variety '4th character turned to left' on pos. 4, unused, an interesting sheet. SG 53/ba

£100-£150

61 (Card)

1930-37 4a bright apple-green, on medium wove, tablet type 'E' Benns setting 44, pos.2 with intact margin, used neatly struck by Bundi native cds, a superb example of this very scarce printing. SG 58a

£120-£150

62 (Card)

c.1935 native envelope franked by ½a black, on medium wove, tablet type 'F', Benns 33, tied by native cds, cover a little crease, still a very rare stamp on cover. SG 63a

£100-£150

63



64

**63 (Card)**

1938 cover to Bhawaniganj, franked by 1/4a ultramarine, on medium wove, tablet type H rouletted, Benns setting 46, used in combination on India KGV 1a brown envelope, tied by native cds, and Bhawaniganj arrival for 26 JULY 38, backstamped by Bundi exchange office mark for 25 JUL, offered with original enclosure. SG 67

£100-£150

64 (Env)

1935-41 4r yellow-green and vermillion on medium wove, tablet type H Benns setting 57 as complete sheet, unused, fine. SG 71

£250-£300

65



66

**65 (Env)**

1935-41 5r vermilion & yellow-green on medium wove, tablet type 'H', Benns setting 57, as complete sheet, unused, very fine. SG 72

£300-£400

66 (Env)

1939-41 native handmade wrapper, franked by four 1a scarlet-vermilion tablet 'H' perf 11, cancelled by vernacular intaglio seal, attractive. SG 75

£100-£150

67



69

**67 (Card)**

c.1940 local cover franked by 1/2a black on medium wove, tablet type I, Benns setting 51, tied by native cds, some splitting to envelope (adhesive unaffected), scarce stamp on cover. SG 77

£100-£150

68 (Card)

1940 1/2a black & 2a bright apple-green on medium wove, tablet type I Benns Setting type 51, large part o.g; small patch of gum loss to 1/2a largely affecting top perfs, otherwise fine, fresh appearance. SG 77-78

£80-£100

69 (Card)

1941 local registered envelope, franked by 1a rose tablet type H (perf 11) and 2a bright yellow-green tablet type I, each tied by native cds, with registered h/s on reverse, small moisture stain to cover affecting the 1a and crease at top right, still attractive. SG 70a,78

£100-£150

**70 (Env)**

1939-41 Type H perf 11, collection of complete sheets organised by Benns settings, including: ¼a greenish blue (2) ½a black, 1a rose (2) and 2a yellow-green (2), fine o.g. SG 73a-76

£150-£200

71 (Env)

1941-1947 mint and used well written up collection on pages we note: 1941-44 part used set to 2a, sadly 4a,8a and 1r with forged cancels, with 3p (3), 6p, 1a, 2a (both shades), 4a as complete sheet some with and without gum, 1947 set to 1r assortment of covers with registered covers, Officials including part set to 2a, 6p on local cover, and complete sheets of 1a and 2a, with noted minor opt varieties, and page of Cash Coupons, generally fair to fine condition.

£600-£700

72 (Album)

1914-41 'Sacred Cows' mint and used collection housed in an album, with detailed annotations from the collector all arranged and identified by tablet types and Benns settings, with postal history including combination KGV postcard, listed shades, also good assortment of identified forgeries, generally fair to fine condition, a lot with much collector interest and retail potential from this popular state.

£2000-£2500

73 (Album)

1914-41 'Sacred Cows' mint and used collection with Officials all as complete sheets, with detailed annotation by Mr Walker identifying all tablet types and Benns settings, noted opt varieties and paper types, generally fair to fine condition, a fascinating and valuable lot.

£1000-£1200

74 (Card)

OFFICIAL: 1915-41 ½a black opt type O1 in red, on thin wove, tablet type 'A' Benns setting 3 as complete sheet, C.T.O by native cds, with paper maker's embossed seal, fine. SG O1aA

£300-£400

77

**75 (Card)**

OFFICIAL: 1915-41 6a cobalt opt type O1 in black tablet type A, on thin wove Benns setting 14, as complete sheet, unused, some roulette separation and reinforced by hinge, otherwise fine. SG O4A

£60-£80

76 (Env)

OFFICIAL: 1915-41 mint and used collection on leaves all tablet type A organised by Benns setting and opt types we note: 1r reddish violet type O1 & O2 in black, 2a deep green opt type O1 in red, 6a cobalt type O2, noted opt varieties, fair to fine condition.

£160-£200

77 (Card)

OFFICIAL: 1914-23 4a apple-green, opt type O2 in black, double and inverted on pelure, tablet type 'B' Benns setting 5 as complete sheet, unused, central roulette separation, otherwise fine, scarce. SG O10B

£200-£250

78 (Env)

OFFICIAL: 1915-41 mint and used collection on leaves all tablet type B organised by Benns settings and opt types 8a orange opt type O2, 1/2a black opt type O3, 1a carmine opt type O3, noted opt varieties, fair to fine condition.

£160-£200

79 (Card)

OFFICIAL: 1915-41 2a emerald opt type O2 in red, on thin wove, Benns setting 20, fine unused. SG O18aB

£80-£100

**80 (Env)**

OFFICIAL: 1915-41 5r scarlet & emerald opt type O1 in black on thin wove tablet type 'C' Benns setting 12, as complete sheet, unused some central roulette separation, still a very impressive item. SG O27A

£1200-£1500

81 (Env)

OFFICIAL: 1915-41 mint and used collection on leaves all tablet type C organised by Benns setting and opt types we note: type O1, 1a orange-red vertical pair with selvage with lower stamp variety opt omitted, 1a carmine, 10a brown olive 4r emerald and scarlet (sadly with small thin), type O2 1a deep red type, 4a olive-yellow, 10a brown olive, 12a sage-green (creased), fair to fine condition.

£300-£400

82 (Env)

OFFICIAL: 1915-41 mint and used collection on leaves all tablet type D organised by Benns setting and opt types we note: type O1 3a red-brown, 12a grey-olive, type O2, 10a bistre, generally fair to fine condition.

£150-£200

83 (Card)

OFFICIAL: 1915-41 ¼a cobalt opt type O3 in red tablet type E, on medium wove, fine unused. SG O32bcaC

£60-£80

84 (Card)

OFFICIAL: 1a carmine-red opt type O1 in black, on medium wove tablet type E, as complete sheet, unused, couple of tones, otherwise fine. SG O34A

£100-£150

85 (Card)

OFFICIAL: 1915-41 ¼a indigo opt type O1 in red, on very thick wove, tablet type E, Benns setting 30, as complete sheet unused, minor light tones, otherwise fine. SG O36aA

£60-£80

86 (Card)

OFFICIAL: 1915-41 ¼a indigo opt type O1 in green on thick wove, tablet type 'E' Benns setting 30, as complete sheet, unused, some light tones, still largely fine. SG O36bA

£160-£180

87 (Card)

OFFICIAL: 1915-41 ¼a indigo opt type O2 in red on thick wove, tablet type 'E' Benns setting 30, as complete sheet, unused, some light tones, otherwise fine. SG O36aB

£100-£150

88 (Env)

OFFICIAL: 1915-41 mint and used collection on leaves all tablet type E organised by Benns setting and opt types we note: type O1, ¼a deep slate with opt in black and red, ¼a cobalt, 1a carmine red, type O2 ¼a deep slate in red, ¼a cobalt opt in black and red, 1a carmine red, selected thick and thin paper issues with 1a scarlet vermilion type O2, generally fair to fine condition.

£200-£250

89 (Card)

OFFICIAL: 1915-41 ½a black opt type O2 in red, tablet type F, on medium wove, Benns setting 33, unused, fine and scarce. SG O40bbaB

£200-£250

90 (Card)

OFFICIAL: 1915-41 ½a black opt type O1 in black tablet type G, on horizontally laid paper, Benns setting 36, unused, fine and scarce. SG O41

£180-£200

91 (Card)

OFFICIAL: 1930-37 ½a black opt type O3 in red on horizontally laid paper, tablet type 'G' Benns setting 36, unused, with intact margin at right, rare. SG O41baC

£260-£300

92 (Card)

OFFICIAL: 1915-41 ½a black opt type O2 in red tablet type G, on medium wove, Benns setting 42, fine unused. SG O42bbaB

£150-£170

93 (Card)

OFFICIAL: 1935-41 ¼a ultramarine opt type O2 in red, on medium wove, tablet type 'H' Benns setting 38, unused, fine. SG O43aB

£180-£220

94 (Card)

OFFICIAL: 1915-41 4a emerald opt type O1 in black tablet type H, on medium wove, Benns setting 46, fine unused. SG O46A

£120-£150

95 (Card)

OFFICIAL: 1915-41 4a emerald opt type O2 in black tablet type H, on medium wove, Benns setting 46, fine unused. SG O46B

£120-£150

101

96



98



96 (Card)

OFFICIAL: 1935-41 4a emerald opt type O3 in black, on medium wove, tablet type 'H' Benns setting 46, unused, rare stamp. SG O46C

£260-£300

97 (Card)

OFFICIAL: 1915-41 1/2a black perf 11, opt type O3 in red, on medium wove, type 'H' large part o.g. fine. SG O48aC

£160-£200

98 (Card)

OFFICIAL: 1915-41 1a scarlet-vermilion perf 11, opt type O1 in black, on medium wove, type 'H' large part o.g. fine. SG O49A

£180-£220

99 (Card)

OFFICIAL: 1915-41 1a rose opt type O1 in black, tablet type H, perf 11, fine large part o.g. SG O49bA

£80-£100

100 (Env)

OFFICIAL: 1915-41 mint and used collection on leaves tablet types G, H & I all organised by Benns setting and opt types we note: tablet type G 1/2a black vert laid paper opt type O2 in red, tablet type H opt type O1 roulette 1/2a black opt in black and red, type O2 1/4a in black, perf 11, 1/4a in black and red with 1/4a greenish blue, 1/2a black in red, 1a scarlet vermilion, opt type 2 1/4a in red, 1a rose, type O3 1/4a in black and type I 1/2a black opt type O1 & O2, generally fair to fine condition

£400-£500

BUSSAHIR

101 (Card)

1896-1900 1/4a slate-violet with monogram in rose, complete sheet of twenty four, unused without gum as issued, some creasing, still very scarce in this intact form. SG 24, £624+

£160-£180

102



102 (Card)

1896-1900 2a orange-yellow type 14, from remainders sheet of four; with lower pair with 'RNS' monogram in blue and upper pair WITHOUT MONOGRAM, presumably as a result of the sheet being folded over; fine unused, an important and exceptionally rare item. SG 30var

£2000-£2500

103 (Env)

1900-01 1/4a vermilion complete sheets including: 1/4a imperf sheets (2) with monogram in mauve, 1/4a pin-perf sheet with monogram in mauve, and later remainder sheets of 1/4a with RNS monograms in mauve and green, generally fair to fine condition. SG 31-37

£160-£180

104 (Album)

1895-1901 mint and used well written up collection, with noted reprints, complete sheets and perf types, we note: 1895 part imperf set to 1r ultramarine, perf set to 1r; with 8a variety without monogram, later reprints with PS monogram mostly as sheets with 'Printed at the Bussahir Press/ by M.H.B' imprint, 1896-1900 range and 1900-01 assortment with noted forgeries, generally fair to fine condition an interesting lot.

£700-£800

105 (Env)

LITERATURE: 1966 The Postal History of Bussahir, Robert Bateman, edition No. 30 out of 100 copies, intact dustcover, fine, a very rare book.

£80-£100

108



CHARKHARI

106 (Env)

1909-19 Type 2, perf 11, 1p orange-brown, 1p turquoise-blue and ½a deep rose-red, 2a grey-blue and 4a deep green as complete sheets of 64, identified by stones and with noted flaws with ½a showing major retouch pos. 29 (R4/5), with large part o.g; some separation still scarce as complete sheets. SG 15b,16,17b,19,20

£400-£500

107 (Album)

1894-1940 mint and used collection well written up by the collector, identifying stone types, major and minor retouches and flaws, and postal history, we note: 1897 'ANNA' types to 4a with shades, 1902-04 set with multiples, 1909-19 type I & II, assortment with blocks, many items positioned by the original collector, 1931 set to 5r with listed varieties, including 3r tete -beche, 5r with centre inverted, 1939-40 surcharges with ½As on 8a brown red on local cover, postal stationery and pages of forgeries, generally fair to fine condition.

£2000-£2500

108 (Card)

1897 half of ½a violet on buff reply card, used cancelled by number of cancels including, Charkhari State P.O squared circle, Charkhari State transit cds's from 25 FE to 3 MA and Esanagar, Satwara markings for 27 FE and 4 MA respectively, with final arrival mark dated 6 MA, an interesting item, rare with cancels of these offices.

£100-£150



COCHIN

109 (Card)

1893 cover from Irinjalakuda to Olavakod-Malabar, franked by ½ put yellow (no wmk) used in combination on India QV ½a green postal stationery envelope, tied by Cochin C5 barred numeral, and Trichur exchange office cds for 12 JUL, backstamped by native despatch markings and Olavakod-Malabar arrival for 13 JUL, fine, a very rare cover. SG 1b

£500-£600

110 (Env)

1902-03 3p blue, perf 12 on thick white paper, wmk small umbrella, in complete sheet of eighty (8x10), fine unused, showing clear variation in the individual clichés, rare. SG 16

£100-£150



Commonwealth & British Empire Stamps Catalogue 1840-1970

The 2023 edition of the Stanley Gibbons Commonwealth & British Empire Stamp Catalogue, still known as 'Part 1' to most, is now available to order.

This comprehensive Stanley Gibbons catalogue covers Great Britain, Commonwealth and Empire countries 1840-1970. The listings include perforation, paper and printing methods, major shades, watermark varieties, important plate flaws, errors, government telegraph stamps and booklets.

Available at www.stanleygibbons.com and through our customer service team on 01425 472 363.



Stock Code R2813-22

Price £94.95



Shown at 70%

111 (Env)

1902-03 2 put deep violet on thick white paper, perf 12, wmk small umbrella (sideways) setting VI, complete sheet of twenty four (two panes of twelve 4x3), unused without gum as issued, fine a rarity in this format. SG 19

£150-£200

112 (Album)

1911-40s 'Raja's' mint and used collection well written up housed in an album with much attention given to types, die, surcharge settings etc... including; 1911-13 set with 2p imperf single used, complete sheets of 2p, 3p and 9p's, 1916-30 6p and 2½a on local registered cover, 1922-29 surcharges with complete sheets of surcharge type 11, 1933-38 Recess and litho printings, 1942 3p on 1a8p surcharge type 21 complete sheet 1943 1a brown-orange used. later issues and good range of covers, generally fair to fine condition.

£700-£800

113 (Env)

1922-29 2p on 3p blue as complete sheet of forty-eight, surcharge types 14 & 15 (R.4/1), with o.g; with toned and dried gum, nevertheless an impressive item. SG 49/49b

£300-£400

114 (1 Box)

1948-50 Raja Maharaja Rama Varma IV mostly used, detailed plating study collection to 3a with officials, the collector noting minor printing flaws and varieties, opt types dies etc... reconstructing plates, settings with blocks and complete sheets, we note, 2p grey-brown Die II, scarce complete sheet of forty-eight, 2a black official complete sheet 3p on 9p complete unused sheet, generally fair to fine condition, viewing encouraged to fully appreciate the level of research undertaken.

£1000-£1500

115 (Album)

1892-1909 mint and used collection well written up in an album with detailed notes by the collector, noting settings, types, etc... with blocks to complete sheets and postal history, we note: 1892 No Wmk issues to 2 put, with ½a put yellow with imperf margin at foot, 1 & 2 put as complete sheet, 1894 Wmk small umbrella, 1896 1 put Wmk arms, 1898-1905 range to 2 put, with sheet reconstructions and blocks, 1 put carmine-red show supposed double print, noted minor varieties and covers, generally fair to fine condition, an interesting lot.

£2000-£2500

116 (Album)

1913-49 Officials collection mint and used collection well written up in an album, we note: 1913 part set to 12a, 3p blue study with opt in red with inverted 'S', plate reconstruction, 1919-33 part set to 12a, 1933-38 6a8p complete sheet, 1938-44 6p red-brown type O11 opt SG O53a (sadly with small tear at left), 1a9p on 1a8p complete sheet, and collection of postal history mostly Second World War period covers many with economy labels, generally fair to fine condition.

£800-£1000

117 (Album)

1898-1948 used postal stationery collection housed in an album all organised by types, with noted minor varieties, surcharges and postmarks, some with additional postal markings, generally fair to fine condition, an interesting lot for the postal historian.

£300-£400



DHAR

118 (Card)

1897-1900 Typeset, 2a black on yellow as complete sheet to 10 (2x5) from setting VII, showing TOP RIGHT CORNER ORNAMENT TRANSPOSED variety R.2/5, fine unused, lower right corner bend and light tone, still rare as sheet. SG 6e

£250-£300

119 (Env)

1897-1900 mint and used collection, well written up on pages with stamps all identified by Mr Walker organised by type, setting etc... with complete sheets and part reconstructed sheets, we note: Typeset issues including: 1/2a black on magenta with 'Line below the upper inscription' variety, 1/2a black on magenta and 1a black on green used individually on local covers, 1898 issues with 1a reddish violet and 2a deep green as imperf singles, postal stationery and identified forgeries, generally fair to fine condition, an interesting lot.

£1500-£1700

DUTTIA

120 (Env)

1899-1906 collection of four values as unused complete sheets comprising of: 1/2a black on blue-green, 1/2a black on yellow-green pelure, with rouletting in black on all four sides, 2a black on yellow buff and 4a black on deep rose, generally fair to fine, now rare as complete sheets. SG 17,17b,19b,20

£200-£250

121 (Env)

1897-1920 mint and used collection, well written up on pages, organised by types we note: 1897-98 issues with 'Small' and 'Large' Ganesh types to 4a with some duplication, 1899-1906 rouletted in colour various issues, 1916 with 1/2a green as complete sheet, 2a lilac as complete sheet, postal stationery and detailed pages of forgeries and forged covers, generally fair to fine condition, an interesting lot.

£1500-£1700

122



123



HYDERABAD

122 (Card)

1901 envelope from Hyderabad to Bombay franked by 1/2a orange used in combination with India QV 1/2a blue green, tied by native cds, transferred to the Imperial Office at Hyderabad with cds dated 28 MA, backstamped with State despatch marks and Bombay arrival, some tones and creasing to cover, still attractive. SG 13b

£150-£170

123 (Card)

1871-1909 2a sage-green, no wmk, perf 12 1/2, in irregular block of ten, with with second stamps in second and third row of block showing 'DOT AT TOP OF CENTRAL INSCRIPTION OMITTED' fine o.g; very rare item. SG 15e

£500-£600

124 (Env)

1950 collection of seven registered combination covers including: cover to Bombay franked by thirteen 6p claret (two obscured by registration label) on India KGVI 1a postal stationery envelope, with additional KGVI 1940 1/2a and 1949 6p, further cover to Bombay bearing 1947 6a sepia and 6p claret on India 2a red envelope, with additional India KGVI and independent definitive, KGVI 1 1/2a postal stationery envelope similarly franked by 6a and 6p issues, all covers opened for display, still attractive and interesting later commercial items.

£150-£170

127



128

**125 (Card)**

1869-1912 mint and used collection well written up housed in an album we note; 1869 plate proofs of the first issue, issued 1a olive-green, with used imperf single, and examples on cover, 1880 reprint of first issue in unissued blue used on commercial covers, 1871-1909 imperf and perf plate proofs, perf colour trials on blue paper, 1871-1909 assorted range organised by type with shades and varieties, plate reconstructions and postal history, generally fair to fine condition, an interesting lot.

£1500-£1700

126 (½B)

1871-1909 detailed plate study of the ½a, 1a, 2a, 3a, 4a, 8a & 12a collection well written up and housed in two volumes, with identified major and minor pantograph flaws often accompanied by enlarged illustrations or diagrams of the said flaws, shades, blocks and many stamps positioned by the collector, generally fair to fine condition, a fascinating lot for the specialist. SG 4-19

£1200-£1500

127 (Card)

OFFICIAL: 1873 1a brown, handstamp type O1 in black, fine used by native circular seal, few trimmed perfs at left, still fine for this scarce stamp. SG O2a £1200

£350-£400

128 (Card)

OFFICIAL: 1873 4a slate, rough perf 11½, opt type O1 in red, lightly used, trivial vertical crease, still a desirable example of this I.E.S rarity. SG O7 £3500

£1200-£1400

129 (Env)

OFFICIAL: 1873 1a drab, pin perf 8-9, handstamp O1 in black in right marginal block of nine, fine unused, attractive block. SG O8c

£60-£80

130 (Album)

OFFICIAL: 1873-1934 well researched and displayed collection where Mr Walker has made attempts to catalogue these notoriously challenging stamps noting listed and un listed handstamps, with many clear reprints of the first issues and some doubtful examples, we note: 1873 1a olive green h/s in red, type 2 2a olive-green, later issues all categorised under his types some with noted m/s opt, 1911-15 Wyon ¼a grey left mint marginal block of twelve, (SG O29a), assortment of postal history, mixed condition, a truly fascinating lot.

£600-£700

131 (½B)

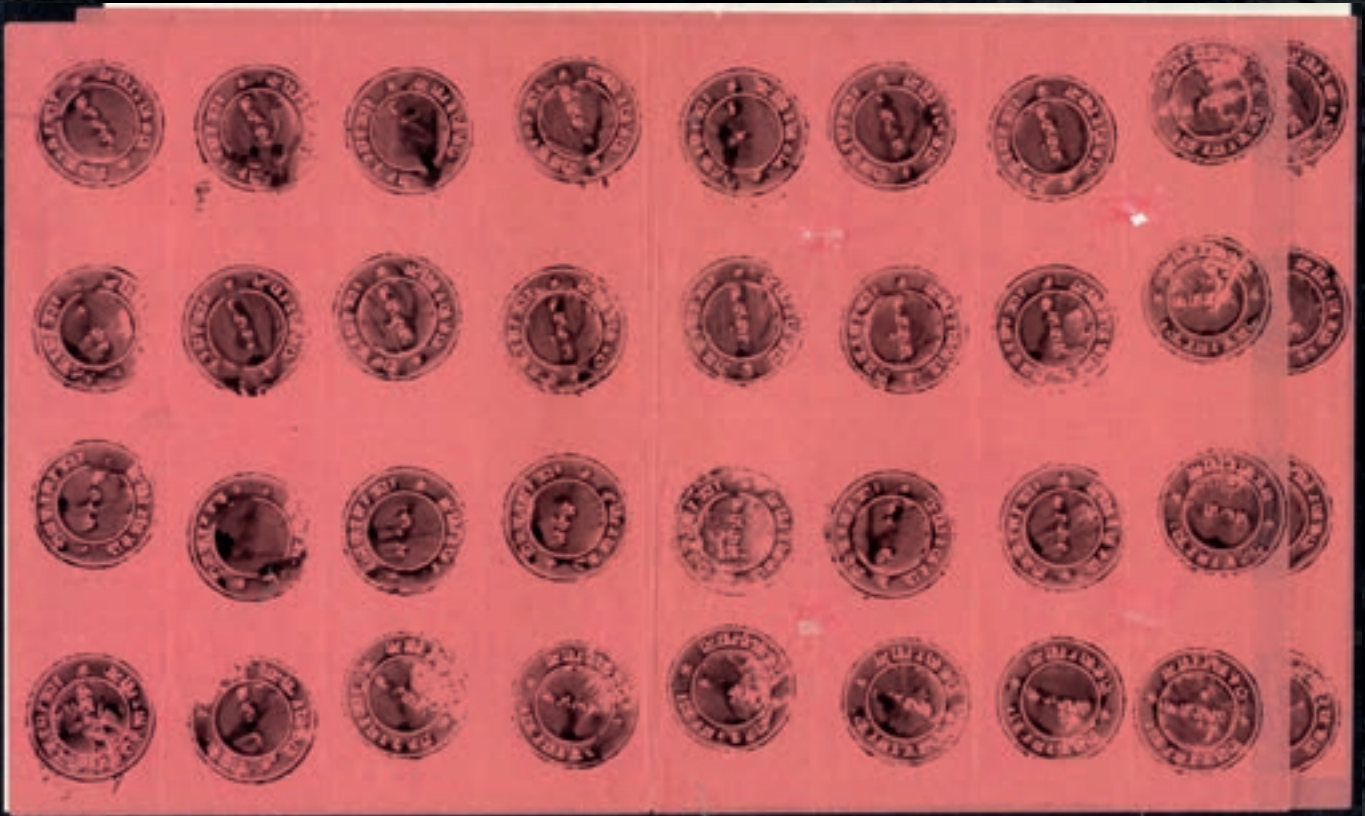
1870s to 1940s mint and used collection of postal history and postal stationery, well written up and organised by types housed in two albums we note: 1879 exceptional assortment of Private order Envelopes, all identified and arranged by type (Laid and Wove batonne paper, colours etc...) (20) registered envelopes, 1911 ½a orange postal stationery envelope to Bombay used in combination with 1902-10 KEVII 3p (2) cancelled by Hyderabad Sorting Office exchange cds for 3 MR, generally fair to fine condition.

£700-£800

132 (Env)

LITERATURE: 1929 Hyderabad 1/4 ANNA BLUE 1902 (for SG 20 to 21b) Alexander Holland, with Mr Walkers notes inserted at front, a rare book.

£80-£100



Shown at 55%

IDAR

133 (Env)

1932-44 mint and used collection well written up on pages, we note: 1932-43 white panel issues, with 1/2a on thick paper, local cover franked by 1/2a emerald, and 1/2a yellow-green booklet pane of 4 and pair on cover, coloured panel issues with booklet panes, and covers, 1944 range to 4a with pair of 1a violet on native wrapper, Postal Fiscals with 1a violet and 1 1/4a yellow-green imperf between and pages of forgeries and bogus issues, generally fair to fine condition.

£400-£500

INDORE

134 (Env)

1886 Maharaja Shivaji Rao Holkar, 1/2a study collection, identified by paper types, perfs and stones by Mr Walker, including: thick paper 1/2a bright mauve (7) thin paper, much duplicated organised by shades, examples on cover with 1/2a on local cover used in city of Ujjain in neighbouring State of Gwalior, 1/2a pale mauve block of 24 and noted litho flaws, generally fair to fine condition, an interesting lot.

£300-£400

135 (Env)

1904-1946 mint and used collection, well written up by Mr Walker on pages, we note 1904-20 imperf proofs of 1/4a, 1/2a & 1a in assorted colours, 1/2a lake in blocks of 6 and 10, brown lake shade in block 18, 1a green block of 40, 4a dull blue block of 8, with 1/4a used on India KEVII postcard, 1905 surcharges with covers, 1927-37 Perkins bacon imperf plate proofs, issued set to 5r, 1941-46 part set to 2r, postal history and Officials, generally fair to fine condition.

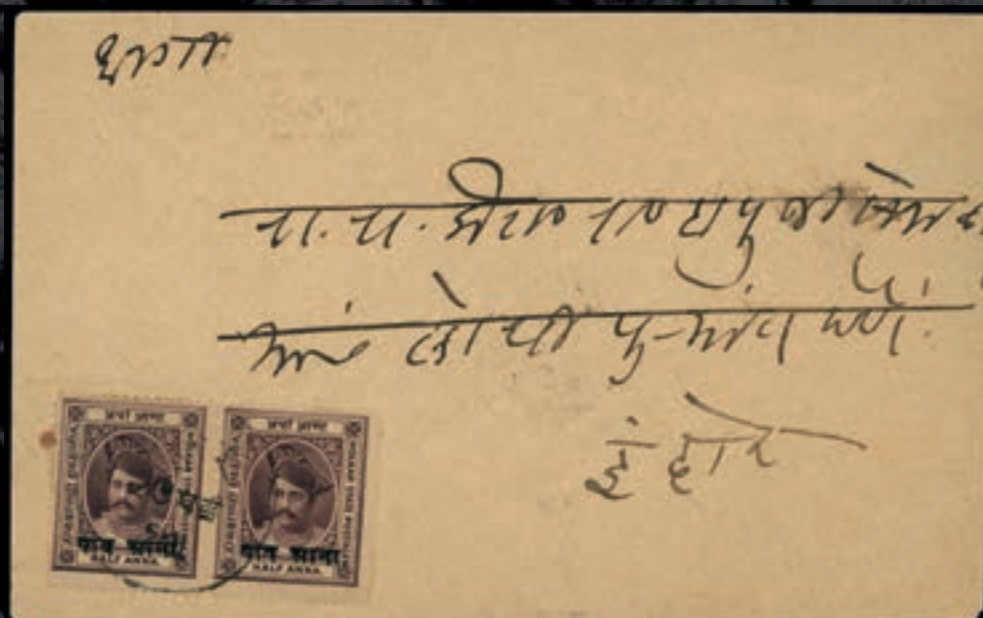
£300-£400

136 (Env)

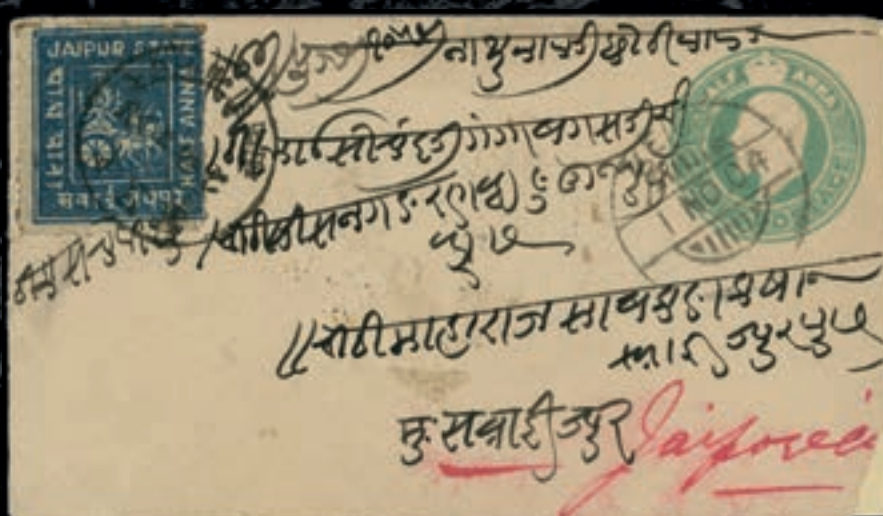
1889 hand stamped 1/2a black on pink provisional, in two block of thirty-two, unused, showing irregular placement of impressions, yielding several instances of 'pair, one stamp sideways' unused, small imperfections, very unusual item. SG 4

£200-£250

137



140

**137 (Card)**

1905 local cover franked by pair of 1/4a on 1/2a brown-purple surcharge type 6, tied by native cds for 27 MY, apparently the earliest known date of usage for this provisional, backstamped by bilingual arrival cds, small stain to cover close to adhesive, still attractive and rare. SG 15

£100-£150

138 (Album)

1889-1890s mint and used collection, well written up by Mr Walker, we note: 1889 1/2a black on pink Provisionals, organised by type with examples on cover, 1889-92 issues with blocks the collector noting re-entry's and varieties, postal history with combination covers, including 1/4a on QV 1/2a green envelope to Bombay, generally fair to fine condition, interesting lot.

£1200-£1500

JAIPUR

139 (Env)

1904 1/2a grey-blue, 1a scarlet (2), 2a emerald green as complete sheets (1/2a as sheet of 24 and 1a & 2a as sheets of 12) with sheet numbers in red M/S, fine o.g; typical perf separation, scarce in this form SG 3,4a,5a

£200-£250

140 (Env)

1904 cover to Jaiporee franked by 1/2a grey blue type 2, used in combination on India KEVII 1/2a blue-green postal stationery, tied by native cds and Imperial exchange office cds for 1 NO 04; backstamped by Jaipur arrival for 2 NO, a little roughly opened at right, still attractive and scarce. SG 3

£200-£250



Shown at 60%

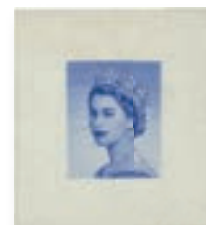
141 (Env)

1904 1/2a blue, Perkins Bacon printing, unused complete sheet of eighty (10x8) top six rows perf 12 with bottom two rows compound perf 12-12½, fine o.g. minor separation, very rare as a sheet. SG 6,6b £1180+

£400-£500

Stamps and Postal History of the World

Tuesday 28th & Wednesday 29th
March 2023



Sign up to our newsletter to keep up to date with all our upcoming auctions.
Visit auctions.stanleygibbons.com



142



143

**142 (Card)**

1904 local cover franked by three 1a brown-red perf 12½, each lightly tied by native cds, backstamped by arrival cds, cover with some peripheral faults, still a rare item SG 7

£300-£400

143 (Env)

1928 1a scarlet perf comb 12 & 11, re-joined (between 4th & 5th stamp) vertical strip of six unused without gum as issued, some small imperfections, still an impressive item. SG 36a, £660+

£200-£250

144 (Album)

1904-1948 mint and used well written up collection housed in an album we note: 1904 ½a pale blue type 1, with selected type II & III, 1a and 2a, 1904 Perkins Bacon issues with 1a carmine imperf proof, 1905-09 with postal history, 1911 issues complete sheets and covers, 1912-22 perf issues similarly represented, 1931 Investiture issues with ¼a used in combination on KGV 9p green postcard, 6a on cover to Agra, 1932-46 'Postage & Revenue' part set to 1r used, 'Postage' issues to 1r with strip of four of 6a, postal history and assortment of Officials, generally fair to fine condition.

£1600-£1800

145



149

**145 (Env)**

POSTAL HISTORY: 1942 ½a + 2a blue Registered Envelope (150 X 90mm) unused, very rare. H&G 1

£200-£250

146 (Album)

POSTAL HISTORY: 1800s-1940s collection of postal history and stationery, well written up and arranged in an album, we note: Jaipur seal franks in assorted shapes and colours, postal stationery and postcards, mixed condition with fine, an interesting lot.

£400-£500

JAMMU & KASHMIR

147 (Card)

1874-76 1a red, special printing in watercolour on native paper, unused, with touching to clear margins, some light tones, still above average for this. SG 13

£100-£150

148 (Card)

1874-76 1a orange-red, special printing used on remnant piece with Jammu rectangular ½a and 1a red all in watercolour, tied by native intaglio seals, piece stained and creased, still attractive and scarce usage of 1a special printing. SG 13a, 60-61

£300-£400

149 (Card)

1874-76 4a yellow, special printing in watercolour on native paper, unused touching to good margins, still a fresh example of this rare stamp. SG 25, £1400

£350-£400

150 (Env)

1874-76 circular special printings in watercolour on native paper, assortment mounted on album page, we note: ½a deep black (2), 1a deep black, four margins with trace of adjoining impression at top, 4a deep black, ½a, 1a & 4a emerald the latter with touching to good margins though sadly creased, and ½a & 1a bright blue, touching to good margins, mixed condition still collectable examples. SG 15-22 (9)

£700-£800

151



152



153

**151 (Card)**

1877-78 cover from Jammu to Amritsar franked by 1/2a black in oil on native paper, used in combination on India QV 1/2a blue envelope, tied by native intaglio seal and Amritsar arrival, backstamped by Sialkot exchange office mark, cover opened at left, otherwise fine. SG 29

£50-£60

152 (Card)

1877-78 1/2a slate-blue in oil on native paper, with just touching to good margins, block of four, fine unused, a very scarce multiple. SG 32

£500-£600

153 (Card)

1877-78 4a red in oil on European laid paper, touching to clear margins in block of four, unused, vertical bend and scissor cut at left, otherwise fine, rare block. SG 39

£700-£800

154



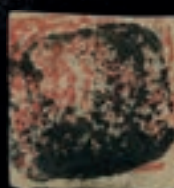
155



156



157

**154 (Card)**

1877-78 1a slate blue in oil on European laid paper, close to good margins in block of six, unused, vertical bend affecting second column, otherwise fine, attractive and scarce multiple. SG 45

£400-£500

155 (Card)

1877-78 handmade registered cover, bearing Jammu rectangular 1a red in oil on native paper and defective 4a sage-green circular in oil on European laid, tied by native intaglio seals, envelope reinforced, nonetheless an important and rare franking. SG 47,70

£800-£1000

156 (Card)

1874-76 Jammu rectangular 1a emerald-green in watercolour on native paper, unused, touching margins with small M/S annotation in black on reverse, still a fine example of this classic rarity. SG 69

£1800-£2200

157 (Card)

1877 (1/2a) "seal provisional" rose-red in watercolour on native paper, touching to good margins, cancelled by native intaglio seal, with black M/S annotation on reverse, fine example of this I.F.S rarity. SG 86

£1000-£1200

158 (Card)

1867 local handmade envelope, franked by Kashmir rectangular 1/2a grey-black in watercolour on native paper, tied by intaglio seal in brick red, some creasing to cover, still a neat item. SG 88

£100-£120

159 (Card)

1875 handmade cover from Kashmir franked by rectangular 1a orange, and uprated by India 4a green Die I (2) and 1a brown, tied by type 17 duplex for Kashmir, backstamped by boxed Registered h/s, with Rawul Pindee transit mark for SE 10 and Umritsar arrival for SEP 12 some creasing still attractive combination cover. SG 94

£100-£120

160 (Env)

1881-83 1/4a orange State II of the plate as complete imperf sheet of fifteen, fine unused, light creases, scarce. SG 131

£200-£250

161 (Card)

1883-94 New Colours range of values all as unused complete sheets including: 1/8a yellow, 1/4a brown (shades x3), 1/2a red (3), 1/2a orange-red, 1a dull green and blue green, 2a red on yellow, 4a green (2) and 8a slate-lilac, generally fair to fine condition, scarce as complete sheets. SG 138-161a

£300-£350

162 (Album)

1866-1894 mint and used well written up collection housed in an album with detailed notes from Mr Walker including: 1866 circular issues to 4a, mostly cut to shape, selected circulars in oil with covers, good range of rectangular with examples on native covers and combination covers 1878 1/2a red rough perf 10-12 used in combination on QV 1/2a blue postal stationery from Jammu to Amritsar tied by seal, (sadly cracked vertically, SG 117) 1879-83 complete sheets of imperf 1a red, 2a red and 8a red (with small tear) generally fair to fine condition a valuable lot.

£600-£700

163 (Env)

1900 Father Simons folders of 'Obsolete Stamps of Jammu + Kashmir' one priced at Rs 5/- and Rs 15/- containing the remainders of the state post offices and reprints though all guaranteed by Father Simons as genuine and not forgeries, fine condition, uncommon.

£200-£250

164 (Album)

POSTAL HISTORY: 1870s-1890s well written up collection housed in an album with detailed notes from original collector identifying postmarks, rates etc... with numerous combination covers on India QV postal stationery and adhesives, we note: British P.O. at Leh with 1/2a orange and India 1/2a blue green used on piece tied by Leh cds for 23 JAN, and Hoshiarpur arrival for 12 FEB 87, generally fair to fine condition, much interest for the postal historian.

£500-£600

165 (Env)

OFFICIAL 1878 2a black, imperf on white laid paper, as complete sheet of twenty, fine unused, minor light stains and creasing to margins, still a rarity as a sheet with few examples known. SG O4 £2000+

£600-£700

166 (Env)

OFFICIAL: 1878 -1894 mint and used collection well written up by Mr Walker noting issue and paper types we note: 1878 imperf values to 2a, 1880-94 toned paper, with pair of 1/4a black on cover and 1/2a black on combination cover from Srinagar to Dharmasala bearing India QV 1/2a blue (die II) and selected complete sheets to 8a black, generally fair to fine condition.

£200-£250

167 (Album)

FORGERIES: detailed reference collection of forgeries and reprints, well written up and identified by the original collector, noting dies, paper types, Brighton Forgeries and Postal Official Forgeries with examples on commercial cover, generally fair to fine condition, a valuable resource for the specialist.

£500-£600

168 (Env)

LITERATURE: 1937 The Stamps of Jammu-Kashmir, A.J. Sefi and C.H. Mortimer, complete with plates, some wear to cover and spine, still a rare and invaluable resource for the specialist.

£200-£250

KISHANGARH

Setting IV : Bottom marginal inscription D.S.W. KG.
 ii N°7 has 'QU' of QUARTER raised.
 iii N°s 9 to 12 have the small lettering corrected.



[7] KISHANGARH [16] O for Q Vertical rouletting omitted

Shown at 65%

JASDAN

169 (Env)

1942-47 mint collection neatly arranged on pages, identified by perf type by Mr Walker we note; 1a pale yellow-green perf 8½-9 as pane of four, 1a bluish green as complete sheet of 8 and 1a dull yellow-green perf 10 as complete sheet of 8 generally fine condition.

£300-£400

JIND

170 (Album)

1874-1885 mint and used collection well written up housed in an album, identified stones types etc... by Mr Walker we note; 1874 first issues to 8a slate-blue with 2a as complete sheet, 1876 range with complete sheets of ½a, 2a, 4a and partial reconstruction of 8a, 'Lion Essays' later issues, with detailed look at later Photographic facsimiles and reprints and postal stationery, generally fair to fine condition an interesting lot of this state's adhesives before becoming a Convention state in 1885.

£2000-£2500

KISHANGARH

171 (Env)

1913 ¼a pale blue as complete sheet of twenty showing ERROR ROULETTED X IMPERF, fine unused, very scarce. SG 59b

£200-£250

173



174



175

**172 (Album)**

1899-1947 mint and used collection well written up housed in an album with detailed notes from original collector including: 1899 1a green pin perf 1899-1900 assorted values imperf and pin perf range, with examples on local covers, 1903 2a as complete sheet, 1904-05 values with die proofs and 1a colour trial in orange as perf block of four, 1913 issues with noted varieties and 2a purple as complete sheet, 1913-16 to 5r with complete sheet of 1/4a, 1/2a, 8a and 5r (with some roulette separation), postal history and Officials, generally fair to fine condition.

£2000-£2500

173 (Card)

OFFICIAL: 1917-18 8a violet (from 1904-05 issue) type O1 H/S in black, lightly used horizontal strip of three, fine, an attractive and rare multiple. SG O22

£300-£350

174 (Card)

OFFICIAL: 1917-18 1r mauve, right marginal (from 1913-16 issue) type O1 H/S in black inverted, used by native cds, leaving profile clear, very fine. SG O34

£200-£250

LAS BELA

175 (Card)

1897 cover from Karachi to Naliya franked by 1/2a black on white used in combination on India QV 1/2a postal stationery envelope, tied by Karachi cds's for 3 JUL, backstamped by Naliya arrival for JL 11, trivial lower left corner bend, still an attractive and very rare combination cover. SG 1

£600-£700



Shown at 75%

176 (Env)

1897 local cover franked by ½a black on white (3), tied by Karachi cds for 18 AUG and backstamped by arrival marking for same date, some perf irregularities to adhesives and faults to envelope, still a scarce early multiple franking. SG 1

£200-£250

177 (Env)

1898-1900 ½a black on greenish grey, Stone VII reconstructed sheet of thirty (6x5, composed of four blocks of four and singles), unused with o.g. generally fine condition, very scarce. SG 3

£400-£500

**178 (Env)**

1898-1900 1/2a black on greyish blue, Stone X, unused sheet of sixteen (4x4) with o.g. some splitting reinforced by hinge and overall toning, still very scarce as complete sheet. SG 2, £720++

£300-£400

179 (Env)

1898-1900 1/2a Stones I & II mixed mint and used study collection well written up by Mr Walker, identifying minor flaws and varieties and positions we note: Stone I part reconstructed sheet of 1/2a black on greenish-grey, Stone II part reconstructed sheet with mint pairs (3) 1/2a black on white as imperf singe (?), and example on reduced cover, generally fair to fine.

£250-£300

180 (Env)

1898-1900 1/2a Stones III, IV & V mixed mint and used study collection well written up by Mr Walker, identifying minor flaws and varieties and positions we note: Stone III part reconstructed sheet, of 1/2a black on greyish blue, with 1/2a on local cover, Stone V 1/2a as block of six, and native wrapper tied by 1/2a black on greenish grey, generally fair to fine condition, an interesting lot.

£500-£600

181 (Env)

1898-1900 1/2a Stones VI, VII & VIII mixed mint and used study collection well written up by Mr Walker, identifying minor flaws and varieties and positions we note: Stone VI part stone reconstruction, Stone VII 1/2a black on thin white, with mint pair and singles and used block of four, Stone VIII with local cover franked by 1/2a black on greenish grey, dated August 1900, generally fair to fine condition, an interesting lot.

£400-£500

182 (Env)

1898-1900 1/2a Stones IX, X, XI, XII & XIII mixed mint and used study collection well written up by Mr Walker, identifying minor flaws and varieties and positions we note: Stone VI part stone reconstruction, Stone IX part stone reconstruction with examples cancelled by intaglio seals, Stone XII 1/2a black on pale grey, horiz mint strip of three, generally fair to fine condition, an interesting lot.

£300-£400

183 (Env)

1898-1900 1a black on orange mint and used assortment on album leaf as part sheet reconstruction of 15 (less pos. 11 the Joined Characters variety R.3/3) and loose page of 7, unused examples with o.g and mostly neat cancels, fair to fine condition. SG 8
£400-£500

184 (Env)

1904 ½a stamps printed wider apart, Stone XXI mixed mint and used study collection well written up by Mr Walker, identifying minor flaws and varieties and positions we note: examination of the Sub Stone units from parent stone, with characteristic varieties, and make up of stone part reconstructed sheet of 18 showing the positions of sub stones A and B, generally fair to fine condition, interesting lot.
£100-£150

185 (Card)

1904 Stone XXII ½a black on pale green, perf 11½, stamps printed wider apart, used in block of six, C.T.O by Las Bela cds for 11 SP 07, with good o.g. top row with minor diagonal bend, still a fine multiple. SG 12
£120-£150

186 (Env)

1904 ½a stamps printed wider apart, Stone XXII mixed mint and used study collection well written up by Mr Walker, identifying minor flaws and varieties and positions we note: many identified characteristic stone flaws, ½a black on bluish green reconstructed sheet of 18, generally fair to fine, an interesting lot.
£200-£250

187 (Env)

1888-1904 mint and used collection, well written up and identified by Mr Walker, we note: 1888 pre stamp cover franked by violet ornate fee handstamp, where prepayment of postage was collected at the principle Police stations, assorted 1904 wide margin ½a on loose pages all identified by Stone and positioned, and page of forgeries, generally fair to fine.
£100-£150

188 (Album)

1904 ½a stamps printed wider apart, Stones XXIII, XXIV & XXV mixed mint and used study collection well written up by Mr Walker, identifying minor flaws and varieties and positions many identified characteristic stone flaws, we note many examples cancelled by intaglio seal, part reconstructed stones and local covers, generally fair to fine condition a fascinating lot.
£400-£500

MORVI

189 (Env)

1931-1948 mint and used collection nearly mounted on pages, we note: 1931 values to 2a yellow-brown, 1931 close setting issue with complete sheets of ½a dull blue and 3p Error of colour (2), 1932-48 successive issues with London and Morvi Press printings with selected complete sheets, range of postal history mostly stationery and page of forgeries, fair to fine condition.
£200-£250

190 (Env)

POSTAL HISTORY: 1931-48 collection of seven covers including: 1931 cover from Manakware to Vavania franked by 3p deep red (2) tied by native seal h/s in violet, 1934 local cover franked by London Printing 6p, 1938 registered cover bearing Morvi Press 2a dull violet, and pink registration label, generally fair to fine condition, mostly nice markings. (7)
£250-£270

191



192



Shown at 50%

NANDGAON

191 (Card)

1891 type I 1/2a blue, imperf, used cancelled by native seal, minor marks on reverse, still fine example, very scarce used. SG 1
£250-£300

192 (Env)

1893 type II 1/2a dull green and 2a red (wide setting) on thin toned wove, as unused complete sheets of sixteen (4x4), minor vertical folds, scarce in this format. SG 3-4, £570++

£200-£300

198



199



ORCHHA

197 (Env)

1897-1948 mint and used collection on loose album leaves we note 1897 prepared for use but not issued set to 4a (imperf and perf), 1914-35 range with shades and duplication, 1935 set to 25r with imperf pairs, perf varieties and proofs, bogus SPECIMEN opts, 1939-42 part set to 2r and forgeries, generally fair to fine condition.

£200-£250

POONCH

198 (Card)

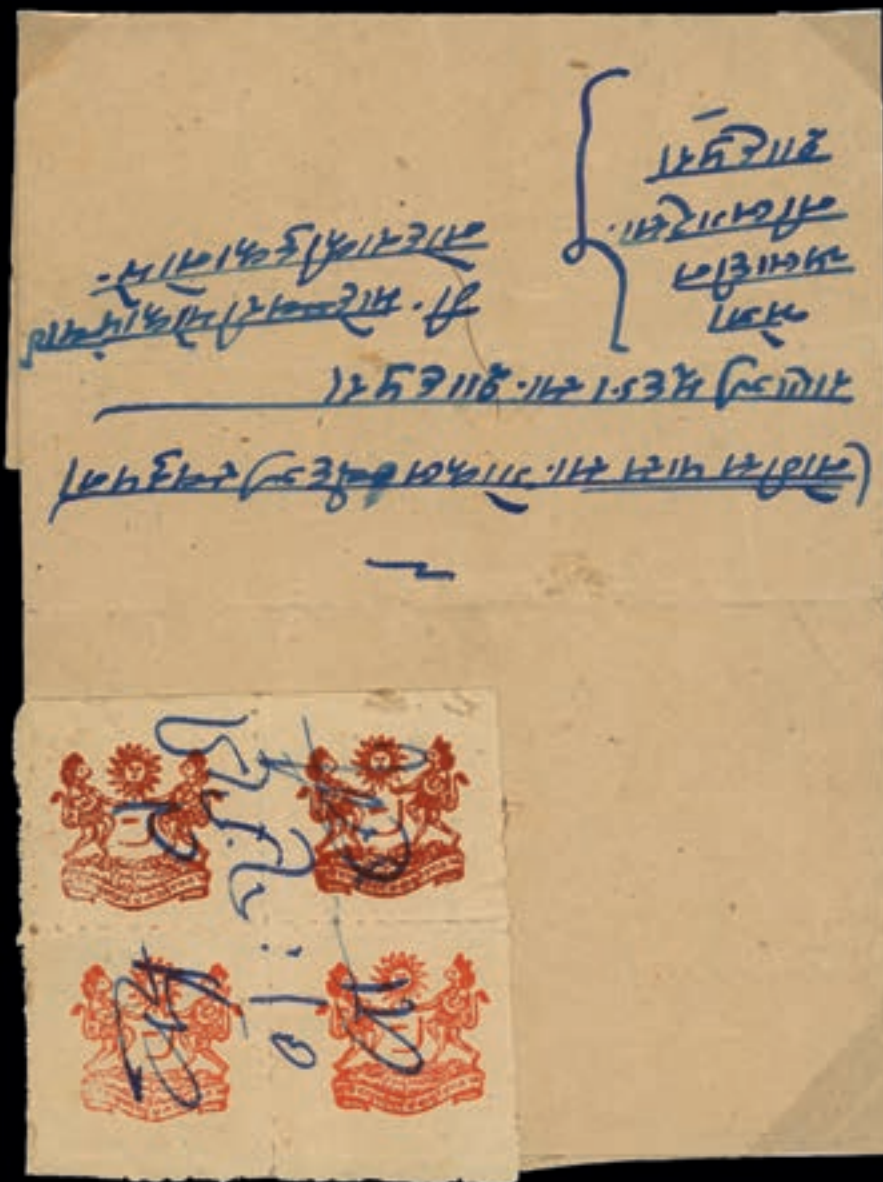
1885-94 1p red on white laid batonne paper, with blue crayon lines, TETE BECHE PAIR, unused, with vertical crease and infinitesimal thin, still fine, a difficult stamp. SG 11b, £850

£150-£170

199 (Card)

1889 cover from Poonch to Jammu, franked by 1885 1/2a red on white laid batonne paper, used in combination on India QV 1/2a postal stationery envelope, tied by square native intaglio seal, with front bearing Imperial Karhuta cds for 23 JUL, backstamped by Sialkot exchange office and Jammu native arrival, some stains, still attractive and scarce. SG 12

£100-£150



SHAH PURA

200 (Env)

1932-47 local registered lettersheet franked by Postal Fiscal 1a red (shades) in block of four, cancelled in blue m/s, interesting piece. SG F1

£200-£250

SIRMOOR

201 (Env)

1892 1p yellow green, 1p deep green (Stone A) and 1p blue (Stone B) in complete sheets of eighty (8x10), unused with o.g, some minor separation, very scarce as sheets. SG 3,3c,4 £480+

£200-£300

202 (Album)

1878-1899 mint and used well researched collection housed in an album arranged by printings with noted stone and subtypes with characteristic flaws and varieties we note: 1878=80 1p blue as imperf single, 1892 range with reprints and forgeries, 1885-96 duplicated range with multiples and large blocks to complete sheets, including 1st printing 6p blue-green & 1a blue part reconstruction, 2a carmine 5th printing in block of 35 (half sheet), 1899 set to 1r, with stone reconstructions, generally fair to fine condition. A truly fascinating lot.

£200-£250

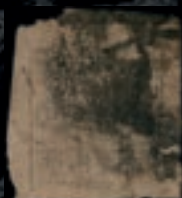
203



205



208

**203 (Card)**

1894-99 6p green opt type 13, IMPERFORATE BETWEEN VERTICAL PAIR, brilliant large part o.g; very fine and rare. SG 23a,var See Part I footnote

Stamps of the Elephants issue from 1894-99 were later optd with similar type to listed type 13 & type 22 and believed to have been sold to collectors.

£800-£1000

204 (Env)

1894-99 Indian Elephants mint and used study collection on loose album leaves, with detailed noted on perf types and later Officials optd similar to type 13 and 22, we note 1894-99 set to 1r vermilion, 6p green block of 12, page showing minor re-entries, Officials, with opt varieties, 3p and 6p optd type 13, block of ten, generally fair to fine, an interesting lot of these popular and attractive issues.

£200-£250

205 (Card)

1892-97 3p orange printing III, opt type 13, ERROR OVERPRINT INVERTED, part o.g. patch of gum lot to top left corner, still fine and scarce. SG 60b, £425

£150-£170

206 (Env)

1900 3p orange and 6p green opt type 18, complete sheet of seventy, with o.g. fine and scarce. SG 78-79

£200-£250

207 (Album)

1890-1900 well researched and detailed collection of Officials, all organised by opt types and printings, with stone reconstructions and multiples, we note: 1890 2a pink type 11, stop before first 'S' variety, 1a bright blue type 12 in red, 2a pink type 12 in black, 1892 3p orange type 13 horizontal strip of 10, 1897 2a carmine type 14 comma after first 'S' variety, 1899 6p deep green type 17 comma after first 'S' variety (thinned and repaired with small pinhole, still scarce SG 75c), 1a bright blue type 17 raised stop after lower 'S', 2a carmine type 17 used (SG 77), 1896 1a grey-blue and 2a carmine type 13, 1896 3p orange and 2a carmine type 20, 1897 2a carmine type 14, type 23 examples, page of forgeries and postal stationery, mixed condition with fine, a true labour of love for these complicated issues, a lot for the specialist.

£1600-£1800

SORUTH

208 (Card)

1868 Typeset 1a black on pink wove, accent over first letter in top and bottom lines showing FIRST CHARACTER IN BOTTOM LINE AS TYPE B (R.1/3) ERROR, four large margins, used by m/s and thumb print leaving the variety visible, small faults still a very rare stamp and desirable thus. SG 8a, £6500

£1500-£2000



Shown at 65%

209 (Env)

1864-75 Handstamped and Type set issues, well written up and identified by Mr Walker, with emphasis on reconstructing sheets by settings we note: 1864 handstamped (1a) black on azure laid used on piece, example uncanceled on cover, typeset 1868 1a black on pink, with noted accents, 1a accent over 2nd letter in top line on local cover, Devanagiri and Gujarati numeral types, with assorted postmarks, 1a red on white laid with vertical pair on local cover with dealers h/s in violet, plate reconstructions of 1a black on azure with error first two characters in last word of bottom line omitted (split and reinforced by hinge) generally fair to fine condition, an ideal study lot for the specialist.

£500-£600

210 (Env)

1878-1886 mint and used collection, well written up by Mr Walker on loose pages, with emphasis on plate reconstructions, complete sheets, identified shades and perf and paper types, we note 1886 1a green (shades) imperf and perf 12 complete sheets of 20, (3) 4a perf 12 as complete sheet of 5, noted minor varieties and page of postmarks, generally fair to fine condition.

£250-£300

211 (Env)

1914 3p in blue-green shade Setting C1 (ii) and 1a in pale carmine Setting D as IMPERFORATE SHEETS OF TWENTY (ten imperf pairs each) with small scroll ornaments, fine unused, scarce. SG 40a,41a,

£300-£400

217



212 (Env)

1914 collection of 3p green (shades, x8) and 1a red (4) all as complete sheets 20 identified by settings either leaf or scroll marginal sheet ornaments we note: Setting B1 & B2 3p, Setting C1 3p in bright blue-green shade, Setting E1 3p in bright green shade, scroll ornaments IMPERFORATE sheet (4x5) Setting A1 1a in deep red shade, Setting B 1a in carmine shade, Setting C 1a in pale carmine, unused, generally fair to fine condition, scarce as sheets. SG 40-41

£300-£400

213 (Env)

1913-14 mixed mint and used collection, well written up by Mr Walker we note 1913 3p and 1a surcharges with complete sheets of 3p on 1a emerald and 1a on 4a red, 1914 issue with imperf singles of 3p and 1a, mostly organised by setting types with plate reconstructions, large blocks and complete sheets including, 3p green perf 12 Setting C1 (ii), 3p bright green perf 12 Setting D4, 3p green Setting D1 imperforate sheet with scroll ornaments, 1a red part imperforate sheet comprising of block of 12 and block of 4 with leaf ornaments, generally fair to fine condition, an ideal lot for the specialist.

£300-£400

214 (Env)

1923-29 well written up collection of complete sheets, noting Plates, paper and perf types, and minor varieties we note: 3p mauve blurred impression on wove, pin perf 12, 3p mauve clear impression complete sheet of 32 large holes perf 12, (two panes of 16, Plate B & A) x2, 1a red clear impression perf 12 sheet of 16 (4x4) 1a red pin perf 12 and 1929 3p clear impression on laid paper, perf 12, complete sheet of 32, unused, generally fair to fine condition, increasingly scarce as sheets. SG 44-47

£400-£500

215 (Env)

1923-29 well written up collection with large blocks and complete sheets, we note; 1923 3p on 1a red surcharged type 14 and larger surcharge type 14a in sheet of 16, identified by Mr Walker, 1923 blurred impression 3p Plate B pane of 16, clear impression 3p reconstructed sheet of 32, 1a red perf 12 sheet of 16, 1929 clear impression 3p mauve pane of 16 IMPERFORATE (eight pairs), and 1929 3p as sheet of 32 on wmk paper, generally fair to fine condition.

£300-£400

216 (Env)

1929-1949 mint and used collection well written up on loose pages, we note: 1929 set to 1r black and pale blue, assortment of local covers, with registered cover franked by 1929 ½a, 1a and 2a, Officials with type O1 opt to 1r, 1932 opts type O2 with 1r black and pale blue opt type O3, used (sadly creased), officials on cover, 1949 1a purple provisional, type 21 opt on Bhavnagar Court Fee, with example on cover, 1948 Official 1a on 1r opted on SG O12a, generally fair to fine condition.

£300-£400

217 (Card)

OFFICIAL: 1948 ONE ANNA on 2a black and dull orange, neatly cancelled by cds, very fine. SG O14a

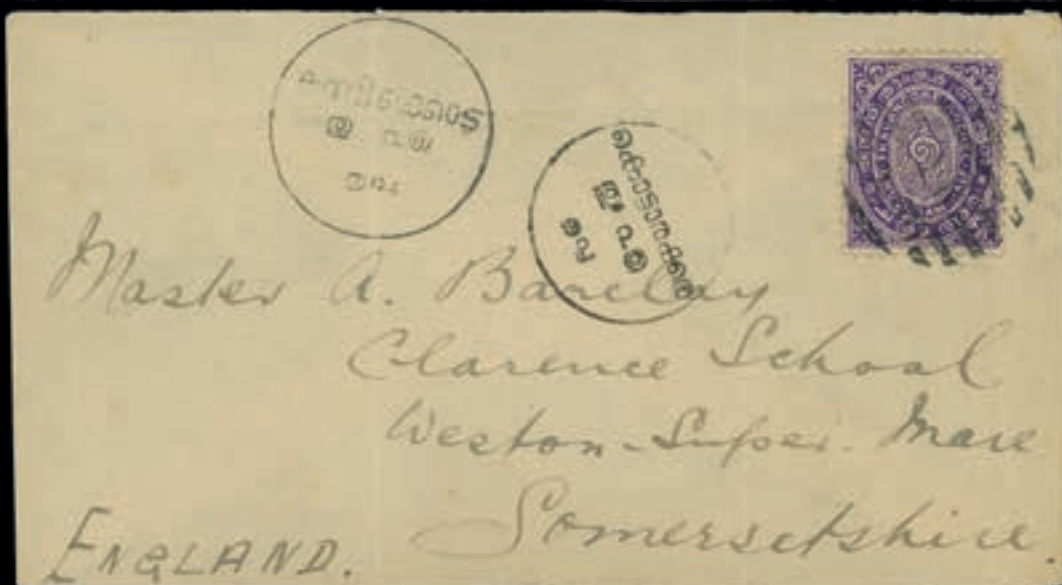
£160-£180

218 (Env)

1890s Handstamped and Type set forgeries and reprints study collection well written researched by Mr Walker, we note typeset 1a black on blue wove as sheet of 16, 1a red on white sheet of 16, 4a black on white and blue wove as sheets of 16, assorted range of 1a and 4a's in black or red on various coloured papers, with noted varieties, some imperf or perforated, some optd REPRINT, and many positioned, generally fair to fine condition, a fascinating lot.

£500-£600

221



TRAVANCORE

219 (Env)

1889-1904 ½ch purple, ¾ch black and 1ch ultramarine, wmk A, in complete sheets of 56 (14x4, for ½ch) and 84 (14x6) for ¾ch and 1ch respectively, fine unused o.g. scarce as sheets. SG 4c,5,6 (3)

£200-£250

220 (Album)

1888-1904 mint and used well researched collection by Mr Walker of the first issues with noted varieties, we note: 1888 4ch green with noted types, 1888 1ch ultramarine (shades) with blocks, 2ch with blocks, 1888-1904 Wmk A 1ch with two imperf singles, large blocks with many positions and settings identified, and few covers, generally fair to fine condition a fascinating lot.

£400-£500

221 (Card)

1902 cover to from Kunnicode England franked by ½ch purple, used in combination with India QV 1a carmine, tied by oval of bars and native transit marks, transferred to Imperial Exchange office at Kottarakara dated 11 NOV, with Weston Super-mare arrival for NO 30, couple of vertical creases to envelope, an attractive and rare usage. SG 4bc

£200-£250

222 (Env)

1904-20 14ch orange-yellow wmk B, in complete sheets of eighty four (14x6) fine unused o.g. scarce. SG 20

£100-£150

223 (Env)

1924-39 ¾ch black wmk C in complete sheets of eighty four (14x6) fine o.g. trivial perf splitting and selvage partly missing from foot of sheet, still very rare. SG 38, £924+

£380-£420

224 (Env)

1924-39 4ch grey-green wmk C in complete sheet of eighty four (14x6) fine o.g. some perf separation, still scarce as an intact sheet. SG 45, £420+

£180-£220

225 (1 Box)

1889-1939 comprehensive study of the Electros of the ¾ch housed across five albums, value all organised by types and settings with enlarged photocopies of the respective Electros noting all various characteristics from 1 to 50 and 51 to 84, and reconstructions of the settings with substituted electro examples, a remarkable and fascinating lot, for the specialist.

£300-£400

226 (Album)

1888-1939 collection of either large blocks or complete sheets, all unused, with detailed notes from Mr Walker identifying electros, settings etc... including: 1888 2ch red in blocks of 9, 16 & 20, 1904 ½ch slate lilac and ½ch reddish lilac (14x6) sheets, 1904-20 ½ch lilac (14x6) sheet, 1906 ¼ on ½ch reddish lilac (14x6), ¾ch on ½ch reddish lilac (14x6), 1921 5c on 1cg grey-blue (14x6), 1924-39 6ca brown-red (14x6) and 10ca pink (14x6) x2, generally fair to fine condition, sheets from this state seldom offered in this quantity.

£500-£600

227 (Album)

1904-46 mint and used well researched collection by Mr Walke with noted varieties, blocks and shades, we note: Wmk B 1904-20 range with blocks and covers, 10ca pink, 1914-22 5ca olive-bistre imperf between horiz pair, 1924-39 ¾ch mauve as imperf colour trial block of four on vertical laid paper, 5ca olive-bistre and 5ca chocolate imperf between horiz pair, 1932 surcharges with 2c on 1¼a claret surcharge type 14 supposed error surcharge inverted olive-bistre imperf between horiz pair 1931 Coronation, 1932 1c om 5ca chocolate imperf between horiz pair, ranges of 1939 issue and postal history, generally fair to fine condition

£500-£600

228 (Env)

OFFICIAL: 1919-25 1ch grey-blue opt type O1 in red, in complete sheet of eighty four (14x6), with R.7/7 showing 'O' inverted variety, fine used, very rare. SG 20/b, £1000+

£400-£500

229 (Env)

OFFICIAL: 1925-30 10ca pink, wmk C, opt type O1 in black, in complete sheet of eighty four (14x6), with noted opt varieties including inverted 'O' (R.1/7) & inverted left 'S' (R.6/1, R6/8) and inverted right 'S' (R.6/7), fine unused, a scarce sheet. SG O24,c,d,e

£300-£400

230 (Env)

OFFICIAL: 1926-30 5ca olive-bistre opt type O2 in black, in complete sheet of eighty four (14x6), with R.4/9, 'S' inverted variety, fine unused, scarce as a sheet. SG O28/a

£300-£400

231 (Env)

OFFICIAL: 1930-39 6ca brown-red perf 12½, from the late composite setting showing opts type O8 on top rows and type O6 to remainder se-tenant in complete sheet of eighty four (14x6), fine unused, scarce sheet. SG O66Aa/ba £580+

£250-£300

232 (Env)

OFFICIAL: 1930-39 4ch grey-green perf 12½, from the late composite setting showing opts type O8 on top rows and type O6 to remainder se-tenant in complete sheet of eighty four (14x6), fine unused, a very rare sheet. SG O69Aa/Ba, £3900+

£1500-£1800

233 (2 Albums)

OFFICIAL: 1911-32 well written up collection of large blocks or complete sheets, housed in two albums with some duplication all organised by opt types with noted varieties, including: 1919 ½ch reddish violet, with R.5/6 'CHUCRRAM' spelling, 1919-25 1ch grey-blue two complete sheets, with inverted 'O' variety, 1926-30 10ca pink (4), 1¼ch claret, 1930-39 ¾ch mauve (2), generally fair to fine condition, a scarce lot, with such quantity seldom offered.

£500-£600

234 (Album)

OFFICIAL: 1911-45, mint and used well written collection housed in an album with detailed notes by Mr Walker identifying opt and wmk types, perf types and minor and major varieties, we note 1911-3- 4ch slate-green surcharge in blue, inverted letters on opts, with blocks and multiples, 1930-39 4ch grey-green opt in red irregular block of 8 (3x5) showing large 'S' (R.6/14), selected examples with imperf between or between margin, generally fair to fine condition, a truly fascinating lot.

£700-£800

235



236



Shown at 80%

235 (Card)

1902 'FOUR CASH' handstamp surcharge on 5ca pink Reply Card on buff card, with native cds's dated 16th NOV 1902, very rare. H&G 15a (unpriced)

Mr Walker noted that this is reported to be the only known used example. Deschal C18.

£200-£250

236 (Env)

OFFICIAL 1942 pre printed Registered envelope (180mm x 90mm) used tied by Experimental P.O cds, pre addressed to 'Anchel Superintendents Office', Ref- 'Anchel.67. 130.000 G.P. 208. 15.2.1118 (1st Oct 1942), rare.

£100-£150

237 (Album)

1890s to 1940s well researched postal history collection, noting the various postal and transit and registration markings with hand illustrated diagrams of some of the cancellations, many multi coloured frankings, postage due marks and officials on cover, generally fair to fine condition a must for the postal historian.

£200-£250



Shown at 60%

TRAVAN-COCHIN

238 (Album)

1949-51 mint and used collection well written up by Mr Walker we note: 1949 set to 6a on 14ch turquoise-green, with identified perf types, 1949 opt type 2 and 3 1a cochin (some with fake cancels), good range of Officials with 3a on 7ch pale blue, compound perf used pair, and postal history, generally fair to fine condition.

£300-£400

WADHWAN

239 (Env)

1888-94 Stone 1A, 1B and Stone II mint collection on pages, all identified by Mr Walker organised by stones with noted minor varieties, we note; Stone A ½pice, on thin tone paper range, an imperf single (listed as a pair in Part I), ½pice compound perf 6½x12½ (2) and part sheet reconstruction of Stone II, mixed condition in places with fine, an interesting lot.

£300-£400

240 (Env)

1888-94 Stone III on thin toned paper, perf 12½ complete sheet reconstruction of forty, unused, many with o.g. some blocks and strips, mixed condition, still very scarce. SG 1

£300-£400

241 (Env)

1888-94 Stones III & IV ½pice mint and used collection on pages all identified and positioned by Mr Walker with noted varieties, paper types etc... including: ½pice on thin paper with violet grid cancels, Stone IV perf 12 irregular block of 12 and ½pice on part cover, tied by grid in black, (cover factor X30) generally fair to fine condition an interesting study lot.

£200-£300

242 (Env)

1888-94 Stone VI ½pice compound perf 12x11 on medium tone wove, part reconstructed sheet of 31 (less pos.5) comprising of intact block of 24 and singles, with o.g. scarce. SG 5a

£300-£400

**243 (Env)**

1888-94 Stone VI ½pice perf 12x11 on medium tone wove, part intact sheet of thirty, with o.g. minor perf separation, still very rare sheet. SG 5, £390+

£300-£400

244 (Env)

1888-94 Stones V & VI ½pice mint and used collection on pages all identified and positioned by Mr Walker with noted varieties, paper types etc... including: ½pice stone V intact sheet of twenty, Stone VI with used block of four with green intaglio seals, ½pice intact blocks of 16, (half of sheet of 32), possible essays with seriffed letter to Wadhwan State, and page of forgeries, generally fair to fine condition, an interesting lot.

£200-£300

INDIA

245 (Card)

1852 Scinde Dawk, ½a white, cut square with clear embossing, used by part intaglio seal, on fragment piece, vertical split and little staining, still a collectable example of this classic Indian rarity. SG S1, £3000

£200-£250

246 (Env)

1854-55 mint and used collection of classics, well written up by Mr Walker, identified by Dies and Stones with noted retouches, including: ½a, Die I Stone 'A' range with ½a blue (deep shade) unused, with good margins, unused marginal vertical strip of three with marginal inscriptions, (sadly separated vertically and re-joined by hinges) Stone B some with 'kiss curl' 1a red Die I, Die II 1a horiz used pair from Stone D, 1a Stone E 'pointed Bust' on registered envelope from Samulcottach to Secunderabad, 2a green and 4a blue and red, either cut square or to shape, with 4a blue and red, Head Die III, Frame Die II, cut square with C/141 cancel and cds, generally fair to fine condition.

£600-£700

247 (Env)

1855-1911 QV to KEVII mint and used collection on loose album leaves we note; 1855 4a and 8a with mourning cover to Somerset franked by 4a black and entire letter from Madras to Edinburgh franked by 8a on glazed and 8p mauve, 1856 -64 no wmk range to 8a, 1865 wmk Elephants head, 1866 6a purple provisional on foreign bill (3), 1882-1900 with high values to 5r, 1902-11 KEVII values to 25r brownish orange and blue, telegraphically used, mixed condition with fine.

£300-£400

248 (Env)

1911-1960 KGV-KGVI and Independence issues mint and used collection housed in an album, we note: 1911-23 single star wmk to 25r, with shades on 3p and Rs flaw used, Coronation Durbar 1911 postal folder with QV and KGV stamps cancelled with decorative Durbar cancel, 1921 9p on 1a with varieties, later issues and commemoratives, 1937-47 KGVI set to 25r, 1947 Independence set and 1948 Gandhi set to 10r, 1949-52 set to 15r, mixed condition with fine.

£300-£400

249 (Env)

1870s-1950s Indian overprints collection, mixed mint and used including: local opts on QV with Bombay Gazette, Bengal Secretariat, C.E.F 1900 QV set, KEVII values, I.E.F and range of Azad Hind Labels to 12a+1r, mixed condition.

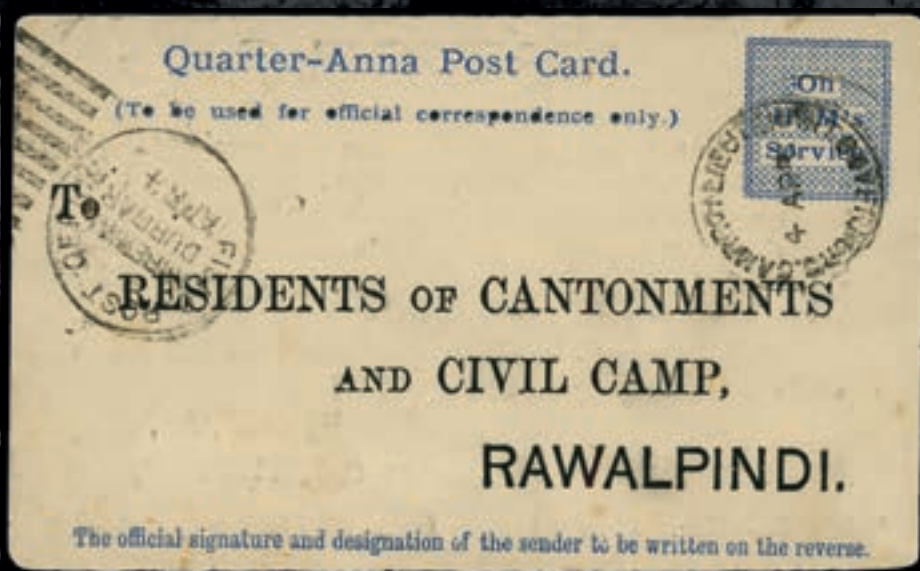
£100-£150

250 (Env)

OFFICIAL: 1866-1980s mint and used collection on loose leaves, we note; 1866-72 8a carmine type O1 opt, 1867 ½a mauve on lilac provisional type O6, used, 1867-82 range with ½a blue Die II type O8 in mint block of 12, 1883-99 to 1r, ½a blue-green and 1a brown-purple, optd SPECIMEN, 1902-09 KEVII values to 25r, KGV-KGVI range and assorted Independence to modern issues, generally fair to fine condition.

£200-£250

251



252



POSTAL HISTORY

251 (Card)

1885 Durbar Field Post Office, ¼a O.H.M.S postcard in blue, addressed to Rawalpindi, tied by Lieutenant Governors Camp P.O. cds for 4 AP, and strike from Field Post Office Imperial Durbar APR 4 mark. The Durbar was held on the 4th April 1885; attended by the Viceroy and the Duke & Duchess of Connaught for the visit of the Amir of Afghanistan. During the lead up to the event approximately 20,000 troops were assembled for the event. The grand military display and event was held to affirm the support of the Amir against the growing presence of Russia in the Middle East after the Second Anglo-Afghan War, a very rare item.

£200-£250

252 (Env)

1897-98 Peshawar Base Post Office, Postal Service card addressed to J.C.P Craster Esqr with the 36th Sikh Regiment of the Peshawar Column sent to suppress a large force of Afrids in the Khyber posts, bearing Peshawar Base Office cds dated 22 FE 98 postcard a little creased, still very scarce.

£100-£150



Shown at 70%

253 (1 Box)

1820s-1940s well researched and displayed collection by Mr Walker of Indian postal cancellations and markings, housed in five albums all organised and identified by types with slogan cancels, dead letter office marks, we note; pre stamp frank marks, type 4-6 postmarks with noted variants, type 7 octagon with 8a carmine die II on cover from Darjeeling to Ireland, Used Abroad with 6a8p slate with Aden '124' type 4, Bagdad, Bandar Abas, Burma Bushire, Pondicherry and Straits Settlements, and postage due covers, generally fair to fine condition, a lot for the postal historian.

£500-£600

254 (1 Box)

1914-1945 well written up and researched collection of wartime incoming and outgoing censored mail, housed in seven albums, organised by types many accompanied by hand illustrated diagrams of the postal and censor markings, noted censor tapes with many registered covers and Officials, and wartime slogan cancels, generally fair to fine condition, an interesting lot.

£200-£250

255 (Env)

RAILWAY: 1887 QV 1a brown postal stationery envelope, from Bombay tied by Grant road RY STN cancel for JU 29, addressed to Daman, Portuguese India, with the 1a paying the 'foreign' rate, carried on the Northern Bombay to Surat line, backstamped by Daman receiving mark for 30 JU, mounted on album leaf with illustrated diagrams of the aforementioned marks and map of the route of the cover, very scarce.

£100-£150

256 (Album)

1860s to 1940s well researched and written up collection of Railway and Travelling Post Office postal history, with hand illustrated diagrams of the various markings and maps, including: 1867 native cover carried by from Calcutta to Umritsur carried by N.W.P railway, Bengal Railway with 4a green die I cancelled by Travelling P.O. Bengal CR cds for 4 NO, (C.R. denoting Calcutta Ramporehaut line), 1880s Registered cover from Delhi to Sambhar bearing 1/2a blue and 1a6p tied by travelling 'T' mark and agents mark for Delhi T.P.O carried from Dehli and Jaipur via Bandikui, 1881 registered cover from Meerut City Rly station franked by 2a orange and 1/2a blue green tied by RMS obliterator, with registered boxed h/s and Meerut city receiving and depatch, generally fair to fine condition a fascinating lot.

£300-£400

COLLECTIONS

257 (1/2B)

CONVENTION STATES: mixed mint and used with postal stationery housed in three album in half a carton, with good representation of the states, with some dubious opts and cancels, including Gwalior 1885-97 opt 14mm values to 5r, opt 13 with 3r brown and green, used, ranges of KEVII to KGVI, with officials, Jind State, Patiala State with 1922 registered cover franked by 6a yellow bistre cancelled by Prince of Wales Camp P.O. cds for 24 FE 22, generally fair to fine condition, a useful lot.

£400-£500

258 (1/2B+1A)

Collectors clear out housed in half a carton and in homemade large folder, mixed mint and used, mostly well written up on pages or loose, including: India reprints of the 1854-55 lithos with sheets of 4a, oddments from Alwar Bundi Sacred Cows, Bhore State, later Hyderabad, Jammu and Kashmir with telegraphs, Jhalawar and Faridkot with litho reprints in fancy colours with complete sheets and Travancore postal stationery, mixed condition with fine.

£700-£800

259 (3 Boxes)

Balance of the collection, contained within three cartons, housed in envelopes, small boxes and loose chiefly used with some mint with postal history, including postal stationery cards and envelopes, collection remnants with Sirmoor range from auction folders with stamps on loose pages. Mr Walkers notes with some plating and duplicated Travancore assortment, mixed condition, with careful sorting sure to reward. (hundreds)

£400-£500

260 (2 Boxes)

INDIA & INDIAN STATES: QV to KGVI collection of assorted revenues and fiscal stamps chiefly used, with documents, stamped papers etc... well written up and housed in ten albums in two cartons, mixed condition, an interesting lot.

£150-£200

261 (Env)

LITERATURE: 1904 British Indian Adhesive Stamps (Queen's Head) Surcharged for Native States, C. Stewart Wilson, revised edition, loose binding, still a scarce and important book.

£80-£100

262 (Env)

LITERATURE: 1927 The Half-Anna Lithographed Stamps of India 1854-55, E.A. Smythies, I.F.S and D.R. Martin, complete with plates, some wear to cover and spine, still an nearly unobtainable and invaluable resource.

£150-£200

PAKISTAN BAHAWALPUR

263 (Env)

1933-48 mint and used collection, mounted on loose album leaves we note; 1933 Centenary of the Alliance 1a black on green receipt stamp, 1935 KGV Silver Jubilee label, 1948 set to 10r, UPU set with perf 17 1/2x17, Officials, 1945 to 1r 1948 set to 10r, 1946 Victory 1 1/2a and UPU, generally fine condition.

£100-£150

END OF THE SALE

NOTES

SG Live

Stanley Gibbons offers a live bidding platform to give the option of real time bidding during an auction. You can place bids prior to the Auction or during the auction via stanleygibbons.com/auctions

This service also enables you to view your auction invoices and pay for lots online. There is no additional charge for online bidding.

Prices realised will be available from on the website after the close of the Auction.

Bidding Increments

£10-£300:	£10
£300-£600:	£320, £350, £380, £400 etc
£600-£1,000:	£50
£1,000-£3,000:	£100
£3,000-£6,000:	£3,200, £3,500, £3,800, £4,000 etc
£6,000-£10,000:	£500
£10,000-£30,000:	£1,000
£30,00-£60,000:	£32,000, £35,000, £38,000, £40,000 etc
£60,000-£100,000:	£5,000
£100,000+	Auctioneer's Discretion

Independent Auction Agents

The below Agents attend each of our Auctions.

These details are provided without guarantee.

Trevor Chinery BA. PTS:

Mobile: +44 (0)7527 444825 | Email: trevortrilogy@aol.com

Nick Martin (Love Auctions):

Tel: +44 (0)1205 460968 / Mobile: +44 (0)7703 766477 | Email: nick@loveauctions.com

Terms and Conditions for Buyers

These conditions set out the terms on which we Stanley Gibbons Limited of 399 Strand, London, WC2R 0LX (company no. 0348043) contract with you (the Buyer) either as agent on behalf of the Seller or as principal if we are the Seller. You should read these conditions carefully.

1 DEFINITIONS

The following definitions apply in these Terms & Conditions:

Auctioneers Margin Scheme: A VAT margin scheme as defined by HM Revenue & Customs;

Buyer: The person who makes the highest bid for a Lot which is acceptable by the auctioneer and if the person is acting as an agent, will be a reference to their principal;

Buyer's Premium: The additional amount payable by the Buyer on the purchase of the Lot, calculated as the relevant percentage (specified in the auction catalogue) of the hammer price;

Certificate of Authenticity: A certificate issued by and Expert Committee confirming the authenticity of a Lot;

Expert Committee: A committee of experts to whom a Lot may be sent for an extension in accordance with clause 5.9.3;

Forgery: A Lot constituting an imitation originally conceived and executed as a whole with a fraudulent intention to deceive as to authorship, origin, age, period, culture or source where the correct description as to such matters is not reflected by the description in the catalogue and which at the date of the auction had a value materially less than it would have had if it had been in accordance with the description in the catalogue. Accordingly, no Lot shall be capable of being a Forgery by reason of any damage and/or restoration work of any kind;

Hammer Price: The amount of the highest bid accepted by the auctioneer in relation to a Lot;

Lot: Any item deposited with us for sale at auction and, in particular, the item or items described against any Lot number in any catalogue;

Reserve: The amount below which we agree with the Seller that the Lot cannot be sold;

Seller: The owner of the Lot being sold by us;

SGA: Stanley Gibbons Limited and subsidiaries and associated companies trading as Stanley Gibbons Auctions;

VAT: Value added tax chargeable under VAT and any similar replacement or additional tax;

VAT Symbols: the symbols detailing VAT status of the Lot details of which are set out at the front of the auction catalogue.

2

SGA's Role as Agent

- 2.1 All sales undertaken by us either at auction or privately are undertaken either as agent on behalf of the Seller or from time to time, as principal if we are the owner of Lot. Please note that even if we are acting as agent on behalf of the Seller rather than as principal, we may have a financial interest in the Lot.
- 2.2 The contract for the sale of the Lot will be between you and the Seller.

3

3.1 CATALOGUE DESCRIPTIONS

Catalogue descriptions

- 3.1.1 Statements by us in the catalogue or condition report, or made orally or in writing elsewhere, regarding the authorship, origin, date, age, size, medium, attribution, genuineness, provenance, condition or estimated selling price of any Lot are merely statements of opinion, and are not to be relied on as statements of definitive fact. Catalogue and web illustrations are for guidance only, and should not be relied on either to determine the tone or colour of any item. No lot shall be rejected on the grounds of inaccurate reproduction. No Lot illustrated in the catalogue and online shall be rejected on the grounds of cancellation, centring, margins, perforation or other characteristics apparent from the illustration. Estimates of the selling price should not be relied on as a statement that this price is either the price at which the Lot will sell or its value for any other purpose.
- 3.1.2 Many items are of an age or nature which precludes their being in perfect condition and some descriptions in the catalogue or given by way of condition report make reference to damage and/or restoration. We provide this information for guidance only and the absence of such a reference does not imply that an item is free from defects or restoration nor does a reference to particular defects imply the absence of any others.
- 3.1.3 Other than as set out in clause 5.10, and in the absence of fraud, neither the Seller nor we, nor any of our employees or agents, are responsible for the correctness of any statement as to the authorship, origin, date, age, attribution, genuineness or provenance of any Lot nor for any other errors of description or for any faults or defects in any Lot. Every person interested should exercise and rely on his own judgment as to such matters

- 3.1.4 You are responsible for satisfying yourself as to the condition of the goods and the matters referred to in the catalogue description.

- 3.2 Examination of goods
You are strongly advised to examine personally any goods in which you are interested, before the auction takes place. Condition reports are usually available on request. We provide no guarantee to you other than in relation to Forgeries, as set out in clause 5.10 of these Terms and Conditions.

4 BIDDING

4.1 Registration before bidding

You must complete and sign a bid registration form before making a bid at auction. Please be aware that we may require buyers who have not purchased before from SGA to submit references prior to bidding.
If you have not bid successfully with SGA in the past, or you are registering with us for the first time, we reserve the right to require a deposit of up to 50% of the amount you intend to spend. Such deposit will be deducted from your invoice should you be successful. If you are unsuccessful at auction, your deposit will be returned by the same means it was paid to SGA.

4.2 Bidding as Principal

When making a bid (whether such bids are made in person or by way of telephone bids, commission or online or email bids), you will be deemed to be acting as principal and will be accepting personal liability, unless it has been agreed in writing, at the time of registration, that you are acting as agent on behalf of a third party buyer acceptable to us.

4.3 Commission Bids

If you give us instructions to bid on your behalf, by using the form provided in our catalogues or via our website, we shall use reasonable endeavours to do so, provided these instructions are received not later than 24 hours before the auction. If we receive commission bids on a particular Lot for identical amounts, and at auction these bids are the highest bids for the Lot, it will be sold to the person whose bid was received first. Commission bids are undertaken subject to other commitments at the time of the sale, and the conduct of the auction may be such that we are unable to bid as requested. Since this is undertaken as a free service to prospective buyers on the terms stated, we cannot accept liability for failure to make a

liability for failure to make a commission bid. You should therefore always attend personally if you wish to be certain of bidding.

4.4 Online Bidding

We offer internet services as a convenience to our clients. We will not be responsible for errors or failures to execute bids placed on the internet, including, without limitation, errors or failures caused by (i) a loss of internet connection by either party for whatever reason; (ii) a breakdown or problems with the online bidding software and/or (iii) a breakdown or problems with your internet connection, computer or system. Execution of on-line internet bids on www.stanleygibbons.com is a free service undertaken subject to other commitments at the time of the auction and we do not accept liability for failing to execute an online internet bid or for errors or omissions in connection with this activity.

4.5 Telephone Bids

If you make arrangements with us not less than 24 hours before the sale, we shall use reasonable endeavours to contact you to enable you to participate in bidding by telephone, but in no circumstances will we be liable to either the Seller or you as a result of failure to do so. This service is available only for lots with a lower estimate of £1000 or above.

4.6 Video images

At some auctions there will be a video screen. Mistakes may occur in its operation, and we cannot be liable to you regarding either the correspondence of the image to the Lot being sold or the quality of the image as a reproduction of the original.

4.7 Bidding by SGA

4.7.1 We reserve the right to bid on Lots on the Seller's behalf up to the amount of the Reserve (if any), which will never be above the low estimate printed in the auction catalogue.

4.7.2 Stanley Gibbons Limited reserves the right to bid on and purchase Lots as principal.

4.8 The Auctioneer's Discretion

The auctioneer has the right at his absolute discretion to refuse any bid, to advance the bidding in such manner as he may decide, to withdraw or divide any Lot, to combine any two or more Lots and, in the case of error or dispute, to put an item up for bidding again.

4.9 Successful Bid

Subject to the auctioneer's discretion, the striking of his hammer marks the acceptance of the highest bid, provided always that such bid is higher than the Reserve (where applicable), and the conclusion of a contract for sale between you and the Seller.

4.10

Private Sale Agreements

If you enter into any private sale agreements for any Lot with the Seller within 60 days of the auction, we, as exclusive agents of the Seller reserve the right to charge you the applicable Buyer's Premium in accordance with these Terms and Conditions, and the Seller a commission in accordance with the terms of the Seller's agreement.

4.11

4.11.1 Return of Lot

Once your bid has been accepted for a Lot then you are liable to pay for that Lot in accordance with these Terms and Conditions. If there are any problems with a Lot then you must notify us within 7 days of receipt of the Lot, specifying the nature of the problem. We may then request that the Lot is returned to us for inspection. Save as set out in clause 5.10, the cancellation of the sale of any Lot and the refund of the corresponding purchase price is entirely at our sole discretion. We will not normally exercise that discretion if the Lot is not received by us

4.11.2 in the same condition that it was in at the auction date.

No lot may be returned on account of condition if the condition was stated on a Certificate of Authenticity accompanying the Lot.

5

AFTER THE AUCTION

5.1

Buyer's Premium and other charges

In addition to the Hammer Price, you must pay us the Buyer's Premium at a rate of 20% of the final Hammer price of each lot and any VAT applicable.

5.2 Value Added Tax

VAT is chargeable on the Buyer's Premium at the standard rate (currently 20%). Lots subject to 20% VAT on the Hammer Price are indicated by the Symbol Σ next to the Estimate in the auction catalogue. Lots subject to 5% Tax on the Hammer Price are indicated by the Ω symbol next to the Estimate in the auction catalogue.

5.3 VAT Refunds

5.3.1 As we remain liable to account for VAT on all Lots unless they have been exported outside the UK within 3 months of the date of sale, you will generally be asked to deposit all amounts of VAT invoiced. Credits will be made when proof of export is provided. If you export the Lot yourself you must obtain customs documents from the Administration Department for which a charge may be made.

If you export the Lot you must return the valid proof of export certificate to us within such period and you have not already accounted to us for the VAT, you will be liable to us for the full amount of the VAT due on such Lot and we shall be entitled to invoice you for this sum.

5.3.3 To apply for a refund of any VAT paid, the proof of export certificate must be sent to our Administration Department clearly marked 'VAT Refund' within 3 months of the date of sale. No payment will be made where the total amount of VAT refundable is less than £50.

5.4 Payment

5.4.1 You must provide us with your full name and permanent address and, if so requested, details of the bank from which any payments to us will be made. You must pay the full amount due (comprising the Hammer Price, the Buyer's Premium and any applicable VAT) within seven days after the date of the sale or such longer period as shall be agreed in writing between SG and the purchaser prior to the auction (the onus for arrangements lies with the prospective purchaser).

5.4.2 You will not acquire title to the Lot until all amounts due have been paid in full. This includes instances where special arrangements were made for release of Lot prior to full settlement.

5.4.3 Payment should be made in sterling by one of the following methods:

(i) Direct bank transfer to our account details of which are set out on the invoice. All bank charges shall be met by you. Please ensure that your client number is noted on the transfer.

(ii) By cheque or bank draft made payable to Stanley Gibbons Ltd and sent to SGA at 399 Strand, London WC2R 0LX. Please note that the processing charges for payments made by cheques or bank drafts drawn on a non-U.K. bank shall be met by you. Please ensure that the remittance slip is enclosed with your payment.

(iii) By Visa or Mastercard. For all card payments there are limits to the amounts we will accept depending on the type of card being used and whether or not the cardholder is present.

5.4.4

Payments should be made by the registered buyer and not by third parties, unless it has been agreed at the time of registration that you are acting as an agent on behalf of a third party.

5.5

5.5.1 Collection of Purchases

Unless specifically agreed to the contrary, we shall retain lots purchased until all amounts due to us, or to the Stanley Gibbons Group, have been paid in full. Buyers will be required to pay for their lots when they wish to take possession of the same, which must be within 7 days of the date of the sale, unless prior arrangements have been made with SGA. Without prior agreement, lots will not be released until cleared funds are received with regard to payments made by cheque.

5.5.2

Unless we notify you to the contrary, items retained by us will be covered in accordance with our insurance policy which is available for inspection at our offices from the date of sale for a period of seven days or until the time of collection, whichever is sooner. After seven days or from the time of collection, whichever is the earlier, the Lot will be entirely at your risk.

5.6

Notification

We are not able to notify successful bidders by telephone. While

23rd March 2023



Name:

Address:

Postcode:

Send this form to us by the fastest possible means to ensure its arrival prior to the sale

This form should be sent to Stanley Gibbons Auction Department in advance of the Auction date. You can alternatively Bid Live Online at www.stanleygibbons.com Prior registration is required. Terms & Conditions Apply. Bids accepted by telephone or email until 9:00am on sale day.

Please bid for me on the following lots, up to the limits stated if necessary. I understand that all are made in accordance with the standard Conditions of Sale as printed in the catalogue and that all purchases are subject to the Buyer's Premium of 20% +VAT.

Signed:..... Telephone No:.....

Email:.....

[illegible]

Please note Postage and Packing will be charged unless the purchaser indicates prior to the Auction closing that they will collect their lots.

PLEASE NOTE ANY SPECIAL
SENDING INSTRUCTIONS

--

I authorise you to charge my card (VISA or MASTERCARD (CREDIT/DEBIT) ONLY)

Card number Issue No:

Expiry Date: CVC No:

- ☐ By the enclosed signed Blank Cheque (Payable to Stanley Gibbons Ltd/Endorsed - Not to Exceed £)
- ☐ Bank Transfer to Stanley Gibbons (Account Details on request)

