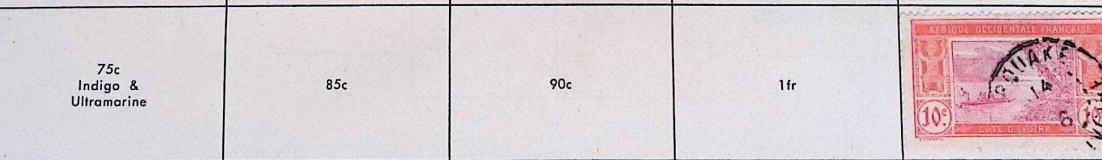


IVORY COAST — COTE-D'IVOIRE

Part of French West Africa. Area: 184,255 sq. mi.; pop.: approx. 4,056,000. Wood, coffee, cocoa.

ISSUES OF 1892-1935

	2c	4c	5c	10c	15c	15c Gray	20c	25c
30c	40c	50c		5c on 30c	10c on 40c	10c on 50c	10c on 75c	



IVORY COAST - COTE D'IVOIRE

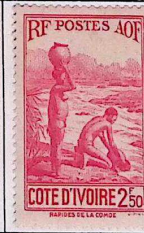
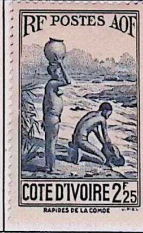
ISSUES OF 1936-44



90c

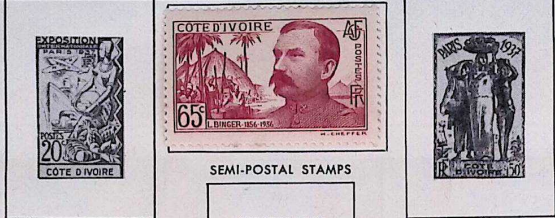


1fr



IVORY COAST - COTE-D'IVOIRE

ISSUES OF 1914-42



SEMI-POSTAL STAMPS



AIR MAIL STAMPS



POSTAGE DUE STAMPS



© MINKUS PUBLICATIONS—NEW YORK, N. Y.



IVORY COAST

Unwatermarked

1959



1959-60



1960



IVORY COAST

Unwatermarked

1961



1961-62



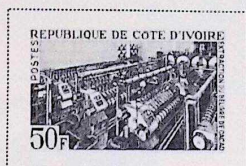
1961



IVORY COAST

Unwatermarked

1968



1968-69



IVORY COAST

AIR POST STAMPS

Unwatermarked

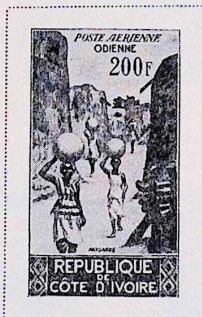
1959



1961



1962



IVORY COAST

AIR POST STAMPS

Unwatermarked

1969



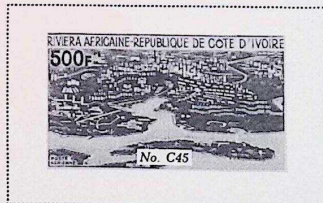
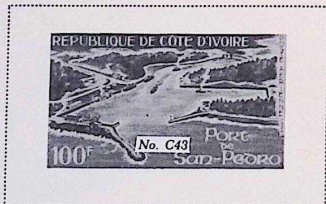
1969



1970



1971





IMPRIMERIE des TIMBRES-POSTE - PARIS

